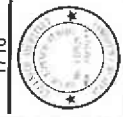


VMI Architecture

1710

VMI AS NUMBER



RECORD DATES

REVISIONS

CLIENT

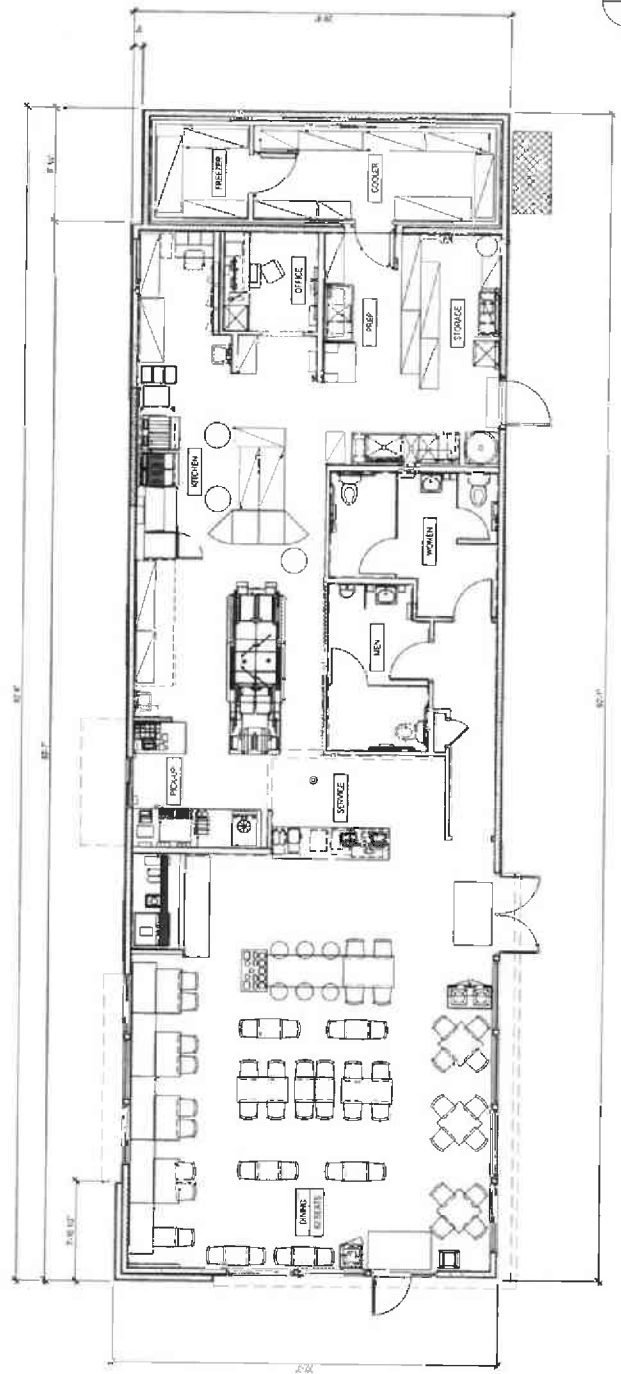
PROJECT

EX EXPLORER SUITE

EXISTING

FLOORPLAN

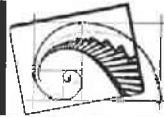
DD 1.0



SEATING PLAN - 1st FLOOR

NOT USED

Small text at the bottom of the page, likely a disclaimer or copyright notice.



VMI Architecture
5215 S. De Anza Blvd., Suite 100
San Jose, CA 95128
www.vmi.com

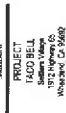
PROJECT NUMBER:
1710



REVISIONS
DATE
BY
REASON

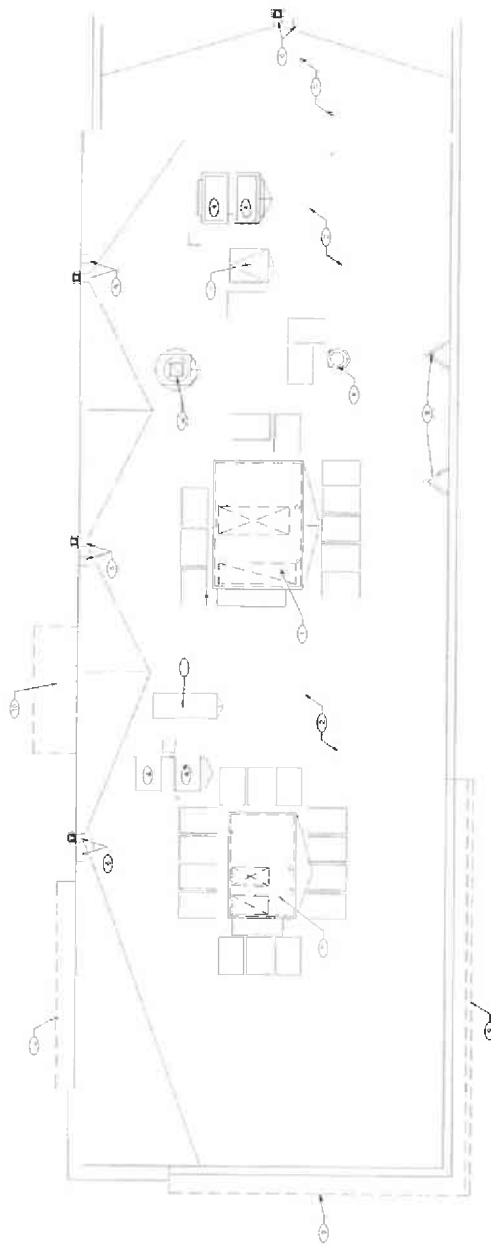
CLIENT
Site: Q&M Management Corp.
3100 S. Bascom Ave. #1000
San Jose, CA 95128

PROJECT
17100 BELL
3100 S. Bascom Ave.
San Jose, CA 95128



EXPLORER SUITE

ROOF PLAN
DD 2.0



NEW ROOF PLAN
DATE: 10/11/11
SCALE: 1/8" = 1'-0"

- SYMBOLS:
- ⊗ 1" - 1" FOR 1" RATED
 - ⊙ 2" - 2" FOR 2" RATED
 - ⊚ 4" - 4" FOR 4" RATED
 - ⊛ 6" - 6" FOR 6" RATED
 - ⊜ 8" - 8" FOR 8" RATED
 - ⊝ 10" - 10" FOR 10" RATED
 - ⊞ 12" - 12" FOR 12" RATED
 - ⊟ 14" - 14" FOR 14" RATED
 - ⊠ 16" - 16" FOR 16" RATED
 - ⊡ 18" - 18" FOR 18" RATED
 - ⊢ 20" - 20" FOR 20" RATED
 - ⊣ 24" - 24" FOR 24" RATED
 - ⊤ 30" - 30" FOR 30" RATED
 - ⊥ 36" - 36" FOR 36" RATED
 - ⊦ 42" - 42" FOR 42" RATED
 - ⊧ 48" - 48" FOR 48" RATED
 - ⊨ 54" - 54" FOR 54" RATED
 - ⊩ 60" - 60" FOR 60" RATED
 - ⊪ 72" - 72" FOR 72" RATED
 - ⊫ 84" - 84" FOR 84" RATED
 - ⊬ 96" - 96" FOR 96" RATED
 - ⊭ 108" - 108" FOR 108" RATED
 - ⊮ 120" - 120" FOR 120" RATED

NOTES

NOT USED

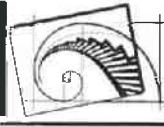
NOT USED

NOT USED

NOT USED

NOT USED

NOT USED



VMJ Architecture
 10000 Wilshire Blvd, Suite 1000
 Los Angeles, CA 90024
 Phone: (310) 206-1100
 Fax: (310) 206-1101
 www.vmj.com

VM JOB NUMBER
 1710



RECORD DATES
 TO: 11/11/11
 BY: VMJ
 DATE: 11/11/11

REVISIONS

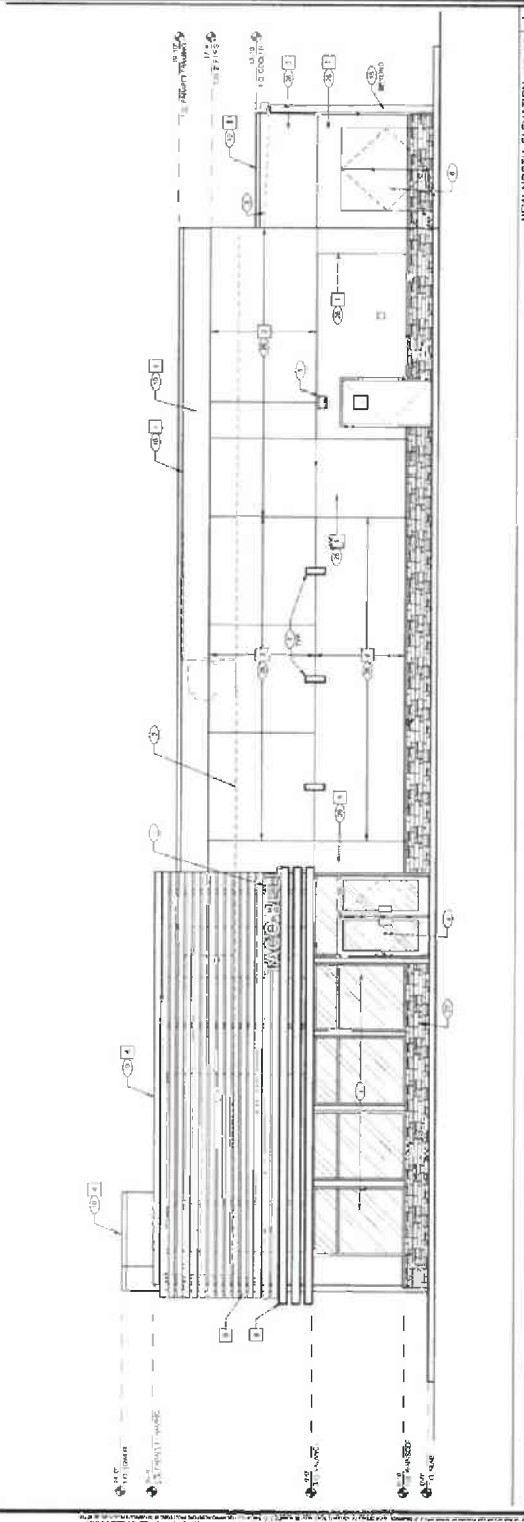
CLIENT
 SHEPHERD/AFIP COP
 3075 Wilshire Blvd
 Los Angeles, CA 90010
 (310) 206-1100

PROJECT
 TACO BELL
 1000 Wilshire Blvd
 Los Angeles, CA 90017



EXPLORER 90 LITE
 EXTERIOR
 ELEVATION

DD 3.0



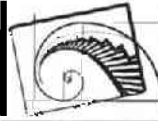
NEW NORTH ELEVATION

- 1. BRICKS ON WINDOW
- 2. BRICK TRIM WINDOW
- 3. BRICKS ON WINDOW
- 4. BRICKS ON WINDOW
- 5. BRICKS ON WINDOW
- 6. BRICKS ON WINDOW
- 7. BRICKS ON WINDOW
- 8. BRICKS ON WINDOW
- 9. BRICKS ON WINDOW
- 10. BRICKS ON WINDOW
- 11. BRICKS ON WINDOW
- 12. BRICKS ON WINDOW
- 13. BRICKS ON WINDOW
- 14. BRICKS ON WINDOW

SYMBOL	AREA	FINISH	DETAIL	DESCRIPTION	COLOR
1	BRICK WALL	BRICK	BRICK	BRICK WALL	BRICK
2	BRICK TRIM	BRICK	BRICK	BRICK TRIM	BRICK
3	BRICK TRIM	BRICK	BRICK	BRICK TRIM	BRICK
4	BRICK TRIM	BRICK	BRICK	BRICK TRIM	BRICK
5	BRICK TRIM	BRICK	BRICK	BRICK TRIM	BRICK
6	BRICK TRIM	BRICK	BRICK	BRICK TRIM	BRICK
7	BRICK TRIM	BRICK	BRICK	BRICK TRIM	BRICK
8	BRICK TRIM	BRICK	BRICK	BRICK TRIM	BRICK
9	BRICK TRIM	BRICK	BRICK	BRICK TRIM	BRICK
10	BRICK TRIM	BRICK	BRICK	BRICK TRIM	BRICK
11	BRICK TRIM	BRICK	BRICK	BRICK TRIM	BRICK
12	BRICK TRIM	BRICK	BRICK	BRICK TRIM	BRICK
13	BRICK TRIM	BRICK	BRICK	BRICK TRIM	BRICK
14	BRICK TRIM	BRICK	BRICK	BRICK TRIM	BRICK

EXTERIOR FINISH SCHEDULE

KEYNOTES



VMI architecture
 20001 - Planning - Research
 20002 - Design - Schematic
 20003 - Design - Preliminary
 20004 - Design - Final

VMI JOB NUMBER
 1710



RECORD DATES

DATE: 11/11/10
 DRAWN BY: [Name]
 CHECKED BY: [Name]

REVISIONS

NO.	DATE	DESCRIPTION

CLIENT

Star of California Corp
 2001 - 2002
 11111 - 11111

PROJECT

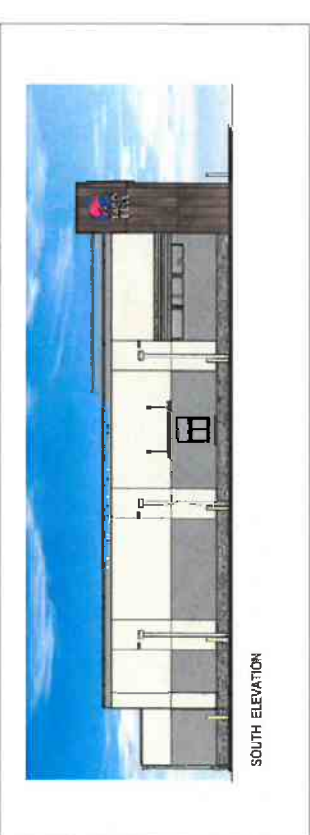
EXPLORES
 11111 - 11111
 11111 - 11111



EXPLORES 90 LITE

COLOR
 EXTERIOR
 ELEVATION

DD 4.0



COLOR EXTERIOR ELEVATION

Small text at the bottom of the page, likely a disclaimer or copyright notice.

