

PROJECT PLANS FOR :

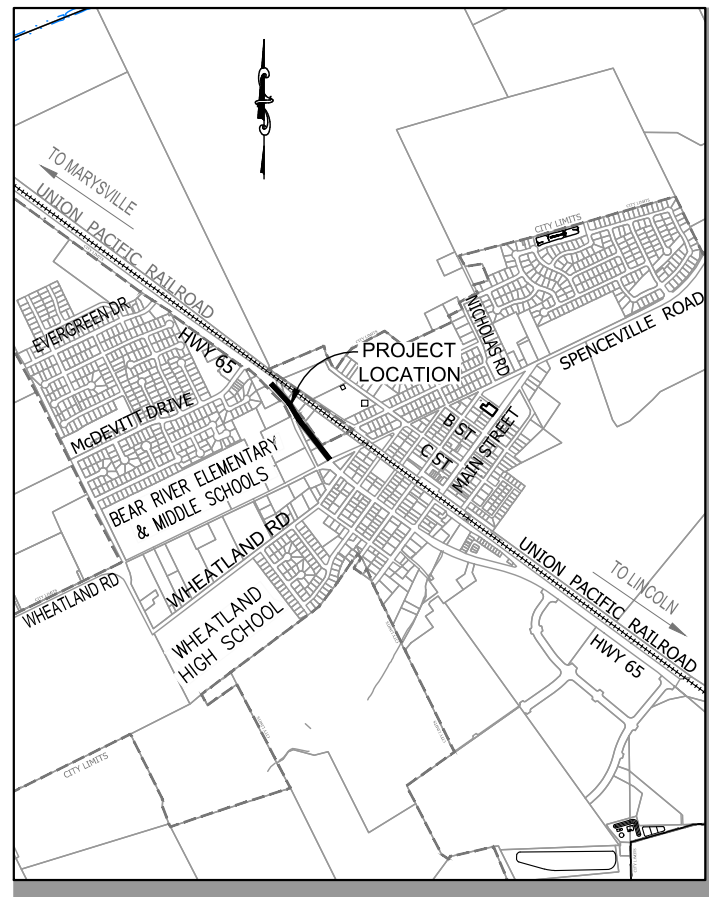
HOOPER STREET

IMPROVEMENT PROJECT

APRIL 2019

FOR THE

CITY OF WHEATLAND
YUBA COUNTY, CALIFORNIA

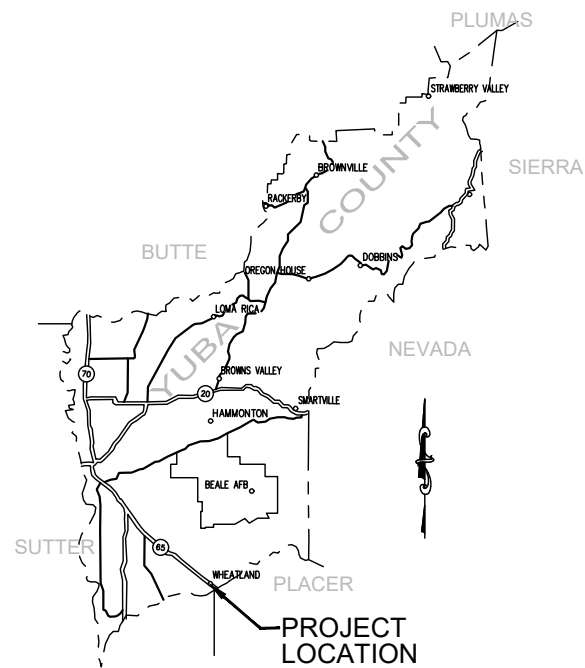


LOCATION MAP

NOT TO SCALE

INDEX OF SHEETS

No.	Sheet Title
1	COVER SHEET
2	GENERAL NOTES, ABBREVIATIONS AND LEGEND
3	TYPICAL SECTIONS AND DETAILS
4	DETAILS
5	DEMOLITION PLAN
6	SITE PLAN
7	GRADING & DRAINAGE PLAN
8	SIGNING & STRIPING PLAN



VICINITY MAP

FOR REDUCED PLANS, THE ORIGINAL SCALE IS IN INCHES

3
2
1
0

Images: Chief, Electronic Signatures/PNG; Wheatland Logo; Wheatland, Inc. Xrefs: Wheatland Bmp; Hooper, ST/MS/74027-county; Layout Name: TITLE SHEET; Plot Date: Apr 17, 2019 at 10:11
Path: F:\Cadd\30 Projects\74027 Hooper ST/MS/74027-county

CONTRACTOR SHALL POSSES A VALID CLASS "B"
LICENSE AT THE TIME CONTRACT IS AWARDED



Coastland Civil Engineering, Inc.
11641 Blocker Dr, Ste 170, Auburn, CA 95603
530.888.9929 530.889.9979 Fax

PRELIMINARY
BID AUTHORIZATION
DATE: APRIL 2019

ASA JOE UTTERBACK, RCE C57700 DATE



CITY OF WHEATLAND
APPROVED DATE _____
JAMES GOODWIN, CITY MANAGER

PROJECT NUMBER
77-4027
DRAWING DATE
APRIL 2019
DRAWING NUMBER
1 OF 8

HOOPER STREET IMPROVEMENT PROJECT

ORIGINAL PLOT DATE: _____
 ORIGINAL SCALE IS IN INCHES: 1" = 30'-0"
 FOR REDUCED PLANS, THE ORIGINAL SCALE IS IN INCHES: _____
 ORIGINAL PLOT DATE: _____

GENERAL NOTES

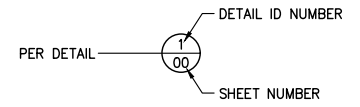
- EXCAVATIONS OVER FIVE FEET (5') DEEP REQUIRE AN EXCAVATION PERMIT FROM THE STATE DEPARTMENT OF INDUSTRIAL SAFETY.
- CONTRACTOR SHALL CALL "UNDERGROUND SERVICE ALERT" AT (800) 642-2444 AT LEAST ONE (1) WEEK PRIOR TO START OF CONSTRUCTION FOR LOCATING UNDERGROUND UTILITIES.
- CONSTRUCTION CONTRACTOR AGREES THAT IN ACCORDANCE WITH GENERALLY ACCEPTED CONSTRUCTION PRACTICES, CONSTRUCTION CONTRACTOR WILL BE REQUIRED TO ASSUME SOLE AND COMPLETE RESPONSIBILITY FOR JOB SITE CONDITIONS DURING THE COURSE OF CONSTRUCTION OF THE PROJECT, INCLUDING SAFETY OF ALL PERSONS AND PROPERTY; THAT THIS REQUIREMENT SHALL BE MADE TO APPLY CONTINUOUSLY AND NOT BE LIMITED TO NORMAL WORKING HOURS.
- UNAUTHORIZED CHANGES & USES: THE ENGINEER PREPARING THESE PLANS WILL NOT BE RESPONSIBLE FOR, OR LIABLE FOR, UNAUTHORIZED CHANGES TO OR USES OF THESE PLANS. ALL CHANGES TO THE PLANS MUST BE IN WRITING AND MUST BE APPROVED BY THE PREPARER OF THESE PLANS.
- THE EXISTENCE AND LOCATION OF ANY UNDERGROUND UTILITY LINES OR STRUCTURES SHOWN ON THESE PLANS WERE OBTAINED BY A SEARCH OF AVAILABLE RECORDS. TO THE BEST OF OUR KNOWLEDGE THERE ARE NO EXISTING UTILITIES EXCEPT AS SHOWN ON THESE PLANS. TAKE DUE PRECAUTIONARY MEASURES TO PROTECT THE UTILITY LINES SHOWN AND ANY OTHER LINES NOT OF RECORD OR NOT SHOWN ON THESE PLANS.
- THE CONTRACTOR SHALL BE RESPONSIBLE FOR ANY DAMAGES TO CITY OR OTHER UTILITIES CAUSED BY HIS OPERATIONS.
- THE CONTRACTOR SHALL MAINTAIN REASONABLE ACCESS TO ALL DRIVEWAYS DURING CONSTRUCTION. MAIL SERVICE SHALL BE MAINTAINED THROUGHOUT THE COURSE OF THIS PROJECT. THE U.S. POSTAL SERVICE SHALL HAVE UNINTERRUPTED ACCESS TO MAILBOXES AT ALL TIMES.
- THE CONTRACTOR SHALL BE RESPONSIBLE FOR OFF-SITE DISPOSAL OF ALL BITUMINOUS PAVEMENT, CONCRETE AND REINFORCEMENT, AND SPOILS NOT NEEDED FOR BACKFILL AS REQUIRED BY THE ENGINEER AND PER THE SPECIFICATIONS.
- PRIOR TO THE START OF CONSTRUCTION THE CONTRACTOR SHALL PROVIDE THE CITY ENGINEER A TRAFFIC CONTROL PLAN IN ACCORDANCE WITH THE PROJECT SPECIFICATIONS.
- PORTIONS OF THE WORK ARE WITHIN EXISTING STATE RIGHT-OF-WAY FOR HIGHWAY 65. CONTRACTOR SHALL OBTAIN CALTRANS DOUBLE ENCROACHMENT PERMIT. REFER TO COPY OF PERMIT OBTAINED BY CITY IN APPENDIX TO CONTRACT SPECIFICATIONS.

CONSTRUCTION NOTE DESIGNATIONS

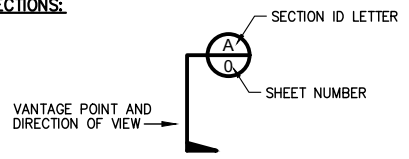
- (R) = ROADWAY AND RELATED ITEMS CONSTRUCTION NOTES.
 (D) = DRAINAGE AND RELATED ITEMS CONSTRUCTION NOTES.
 (T) = STRIPING, SIGNING AND RELATED ITEMS CONSTRUCTION NOTES.
 (X) = DEMOLITION AND RELATED ITEMS CONSTRUCTION NOTES.

DETAIL AND SECTION CALLOUTS

DETAILS:



SECTIONS:



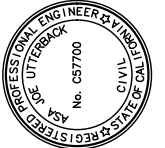
ABBREVIATIONS

AC	ASPHALT CONCRETE	OD	OUTSIDE DIMENSION
AB	AGGREGATE BASE	OH	OVERHEAD UTILITY
ACP	ASBESTOS CEMENT PIPE	PB	PULL BOX
A.P.N.	ASSESSORS PARCEL NUMBER	PC	POINT OF CURVATURE
A.R.V.	AIR RELEASE VALVE	PCC	POINT OF COMPOUND CURVE,
BC	BEGIN CURVE		PORTLAND CONCRETE CEMENT
BFP	BACK FLOW PREVENTER	PED	PEDESTRIAN
BO	BLOWOFF	PI	POINT OF INTERSECTION
BRC	BEGIN REVERSE CURVE	PL	PROPERTY LINE
BSW	BACK OF SIDEWALK	PVC	POLY VINYL CHLORIDE
BWV	BACKWATER VALVE	PVI	POINT OF VERTICAL INTERSECTION
BVC	BEGIN VERTICAL CURVE	PRV	PRESSURE REDUCING VALVE
CB	CATCH BASIN	R	RADIUS
C&G	CURB & GUTTER	R.C.	RELATIVE COMPACTION
CI	CAST IRON	RCP	REINFORCED CONCRETE PIPE
CL	CENTERLINE	RET	RETAINING
CLC	CONTROL LINE COORDINATE	RPB	REDUCED PRESSURE BACKFLOW PREVENTER
CMP	CORRUGATED METAL PIPE	R&R	REMOVE & REPLACE
CO	CLEANOUT	RT	RIGHT
CONC	CONCRETE	RW	RECLAIMED WATER
CP	CONTROL POINT	R/W	RIGHT-OF-WAY
CR	CURB RETURN	S	SLOPE
CSP	CORRUGATED STEEL PIPE	SD	STORM DRAIN
CV	CHECK VALVE	SDE	STORM DRAIN EASEMENT
DET.	DETECTOR	SDMH	STORM DRAIN MANHOLE
DI	DROP INLET	SL	STREET LIGHT
DIP	DUCTILE IRON PIPE	SS	SANITARY SEWER
DWY	DRIVEWAY	SSE	SANITARY SEWER EASEMENT
E	ELECTRICAL, ELECTRICAL CONDUIT	SS LAT	SANITARY SEWER LATERAL
EG	END CURVE	SSMH	SANITARY SEWER MANHOLE
ELEC	EXISTING GRADE	SSCO	SANITARY SEWER CLEANOUT STATION
EL. ELEV.	ELECTRIC	STA	STATION
EL	ELEVATION	STL	STEEL PIPE
EP	EDGE OF PAVEMENT	STD	STANDARD
EVC	END VERTICAL CURVE	TB	TOP OF BANK
EX,(E)	EXISTING	TC	TOP OF CURB
FBG	FEET BELOW GRADE	TCE	TEMPORARY CONSTRUCTION EASEMENT
FC	FACE OF CURB	TEL	TELEPHONE
FG	FINISHED GRADE	TG	TOP OF GRATE
FL	FLOW LINE	TOE	TOE OF SLOPE
FS	FINISH SURFACE	TOP	TOP OF PIPE
FSW	FRONT OF SIDEWALK	TP	TELEPHONE POLE
G	GAS	TS	TRAFFIC SIGNAL
GB	GRADE BREAK	TW	TOP OF WALL
G SER	GAS SERVICE	TYP.	TYPICAL
GV	GATE VALVE	U	UNDERGROUND UTILITY
HDPE	HIGH DENSITY POLYETHYLENE	UG	UNDERGROUND
HP	HIGH POINT	UPC	UNIFORM PLUMBING CODE
IC	INTERCONNECT	UTIL	UTILITY
IG	INVERT GRADE	VC	VERTICAL CURVE
INV	INVERT GRADE	VIF	VERIFY IN FIELD
IP	IRON PIPE	VL	VAULT
JP	JOINT POLE	VAR.	VARIES
JT	JOINT TRENCH	W, WTR	WATER, WATER MAIN
LAT	SANITARY SEWER LATERAL	WM	WATER MAIN
LF	LINEAR FEET	WS	WATER SERVICE
LG	LIP OF GUTTER	W SER	WATER SERVICE
LT	LEFT	WV	WATER VALVE
MB	MAILBOX	< PT	ANGLE POINT
MH	MANHOLE		
OG	ORIGINAL GROUND		

LEGEND

DESCRIPTION OF LINETYPE	PROPOSED	EXISTING
PROPERTY LINE	---	---
EASEMENT	---	---
FLOWLINE	---	---
CENTERLINE/CONTROL LINE	---	---
CHAIN LINK FENCE	---o---o---o---	---o---o---o---
WOOD FENCE	---o---o---o---	---o---o---o---
WIRE FENCE	-x-x-x-x-x-x-	-x-x-x-x-x-x-
WATER MAIN PIPE	-----W-----	-----W-----
SANITARY SEWER PIPE	-----SS-----	-----SS-----
STORM DRAIN PIPE	=====	=====
GAS LINE	-----G-----	-----G-----
TELEPHONE LINE/CONDUIT	-----T-----	-----T-----
ELECTRICAL LINE/CONDUIT	-----E-----	-----E-----
OVERHEAD UTILITY	-----OHU-----	-----OHU-----

DESCRIPTION OF SYMBOL	PROPOSED	EXISTING
CONCRETE		
ASPHALT CONCRETE		
EDGE GRIND		N/A
ROCK SLOPE PROTECTION		
WATER MAIN GATE VALVE		
WATER MAIN BLOWOFF		
WATER METER		
FIRE HYDRANT		
BACKFLOW PREVENTER		
SANITARY SEWER MANHOLE		
SANITARY SEWER CLEANOUT		
STORM DRAIN MANHOLE		
STORM DRAIN CURB INLET/CATCH BASIN		
STORM DRAIN DROP INLET (TOP OPENING)		
STORM DRAIN DROP INLET (SIDE OPENING)		
MAILBOX		
ROADSIDE SIGN		
STREET LIGHT		
TREE AND DRIP LINE		
SURVEY CONTROL POINT		
JOINT UTILITY POLE		
ADDRESS		
CROSSWALK		
CROSSWALK (HIGH VISIBILITY)		



PREPARED UNDER THE DIRECTION OF

ASA JOE UTTERBACK, RCE C57700 DATE _____
 DESIGNED BY _____
 DRAWN BY _____
 REVIEWED BY _____
 WJK/CLG
 AJU
 DHS



Coastland Civil Engineering, Inc.
 11641 Blocker Dr., Ste 170, Auburn, CA 95603
 530.886.9929

HOOPER STREET
 IMPROVEMENT PROJECT
 CITY OF WHEATLAND
 CALIFORNIA

GENERAL NOTES, ABBREVIATIONS AND LEGEND

PROJECT NUMBER
77-4027

DRAWING DATE
APRIL 2019

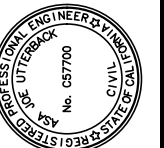
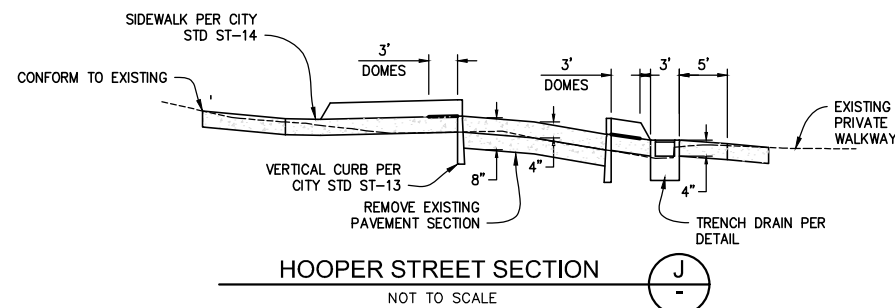
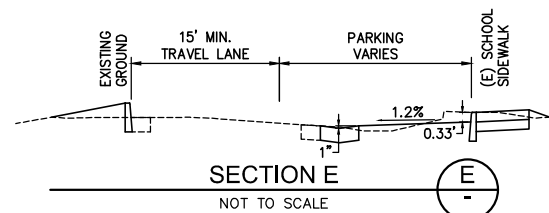
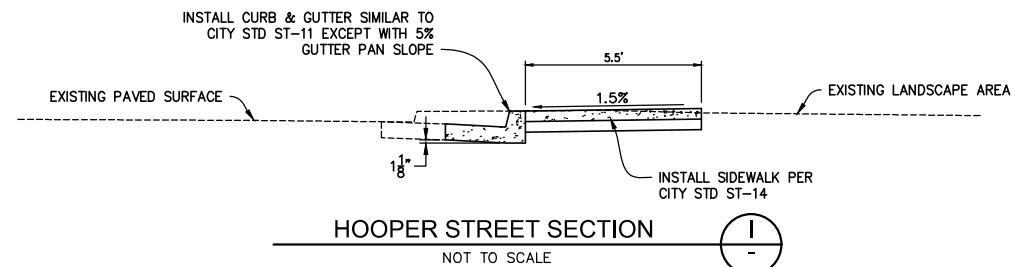
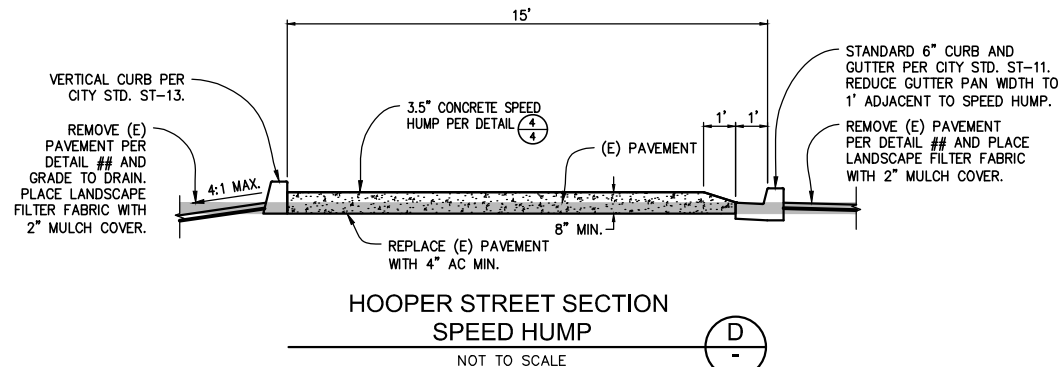
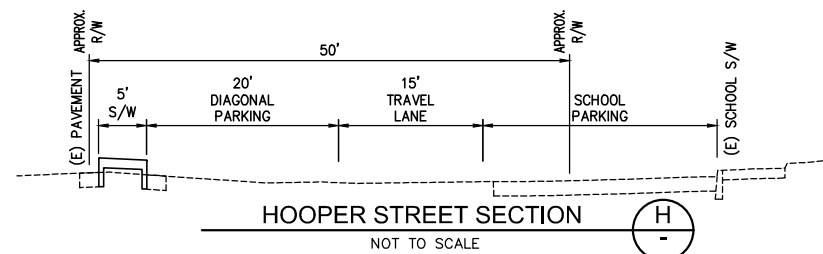
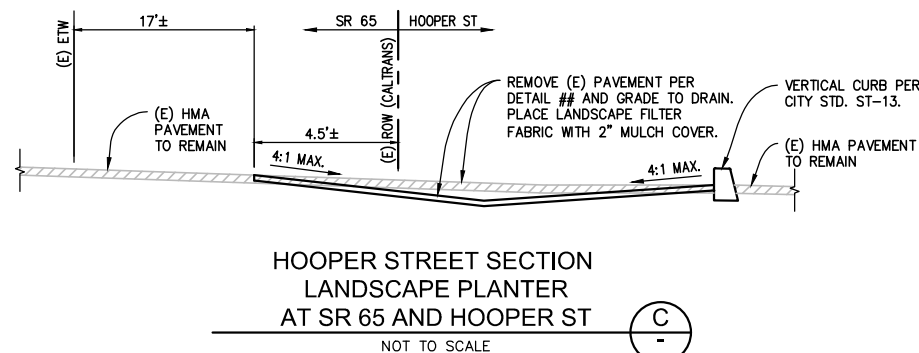
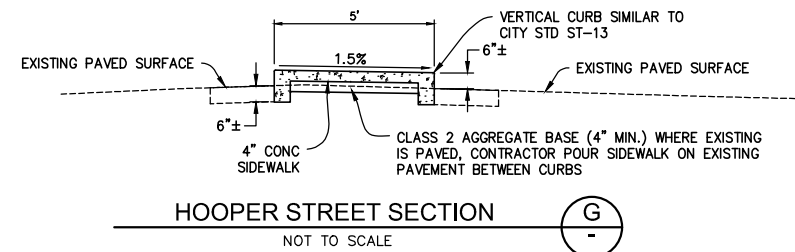
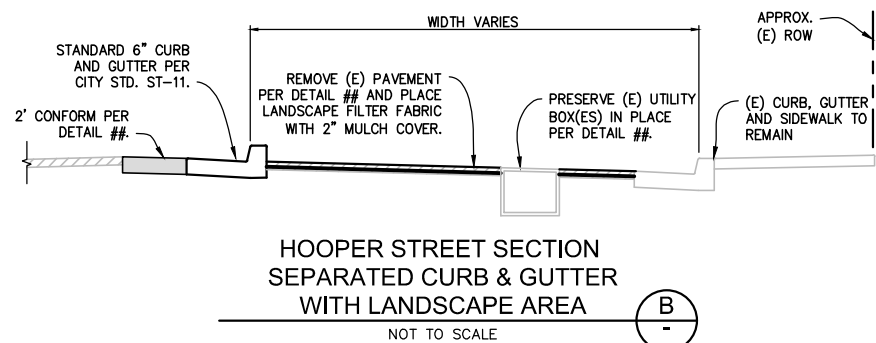
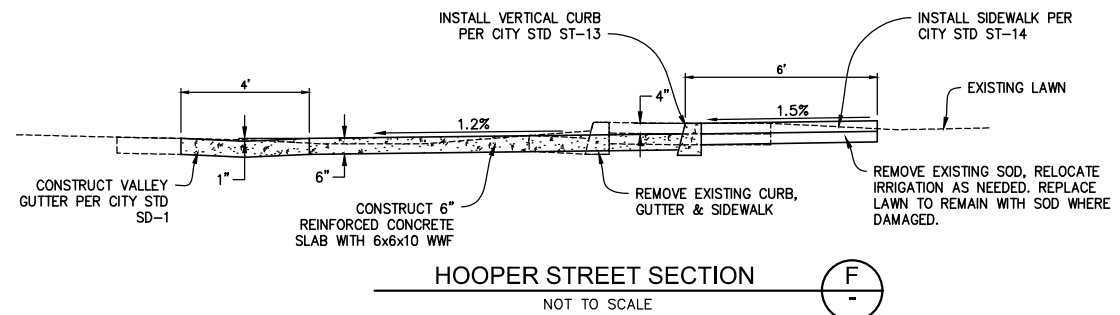
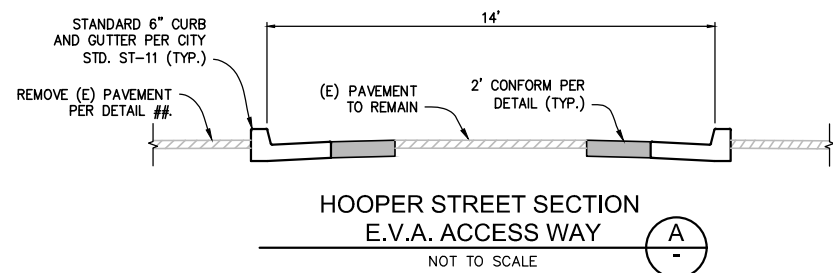
SHEET NUMBER
2 OF 8

PRELIMINARY
 BID AUTHORIZATION
 DATE: APRIL 2019

ORIGINAL PLOT DATE:

FOR REDUCED PLANS, THE ORIGINAL SCALE IS IN INCHES

Images: Chief's Electronic Signature PNG, Wheatland Logo, etc. Date: April 18, 2018 at 15:57



PREPARED UNDER THE DIRECTION OF
 ASA JOE UTTERBACK, RCE C57700 DATE
 DESIGNED BY A.U. DRAWN BY W.K./C.L.G. REVIEWED BY DHS

Coastland Civil Engineering, Inc.
 11641 Blocker Dr. Ste 170, Auburn, CA 95603
 530.886.9979 Fax

CALIFORNIA

HOOPER STREET IMPROVEMENT PROJECT

CITY OF WHEATLAND

TYPICAL SECTIONS AND DETAILS

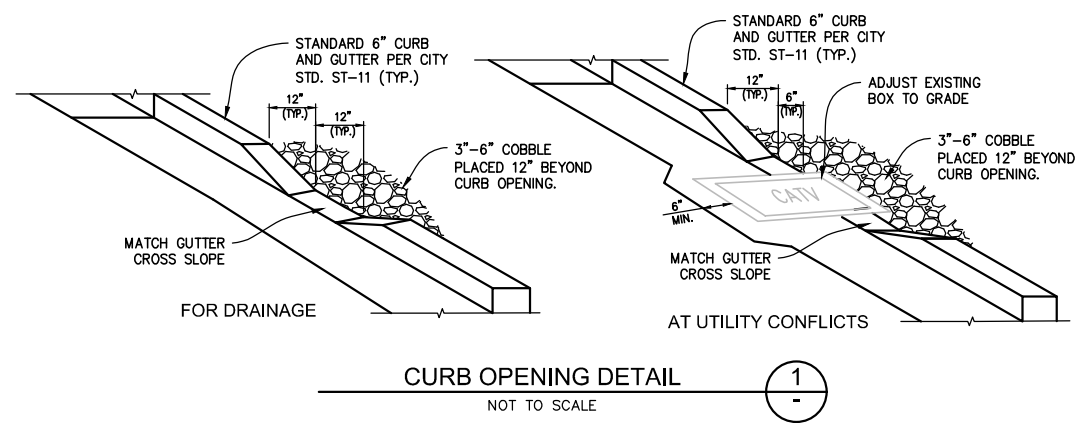
PROJECT NUMBER 77-4027

DRAWING DATE APRIL 2019

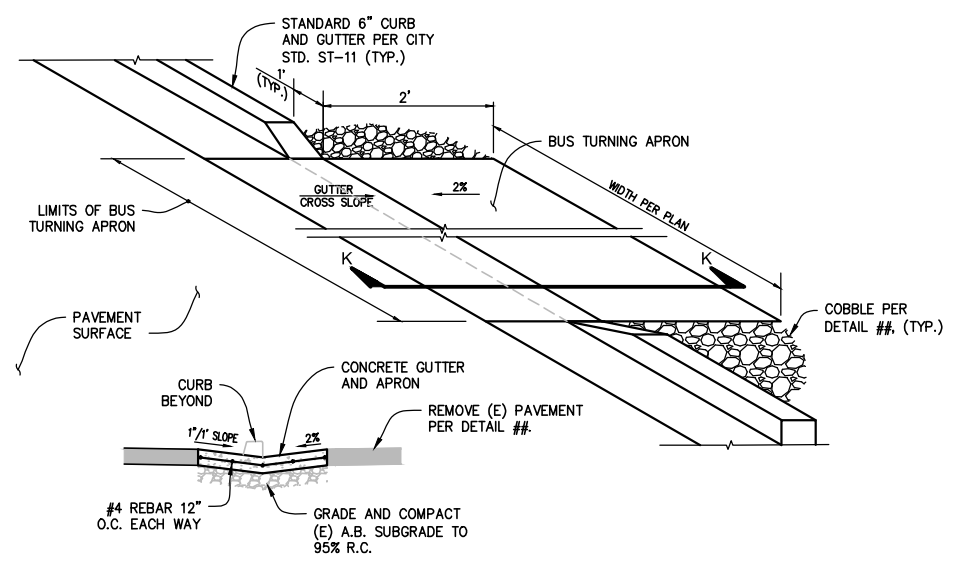
SHEET NUMBER 3 OF 8

PRELIMINARY
 BID AUTHORIZATION
 DATE: APRIL 2019

ORIGINAL PLOT DATE: 3
 FOR REDUCED PLANS, THE ORIGINAL SCALE IS IN INCHES 2
 ORIGINAL SCALE IS IN INCHES 1
 ORIGINAL SCALE IS IN INCHES 0
 ORIGINAL SCALE IS IN INCHES 1
 ORIGINAL SCALE IS IN INCHES 2
 ORIGINAL SCALE IS IN INCHES 3

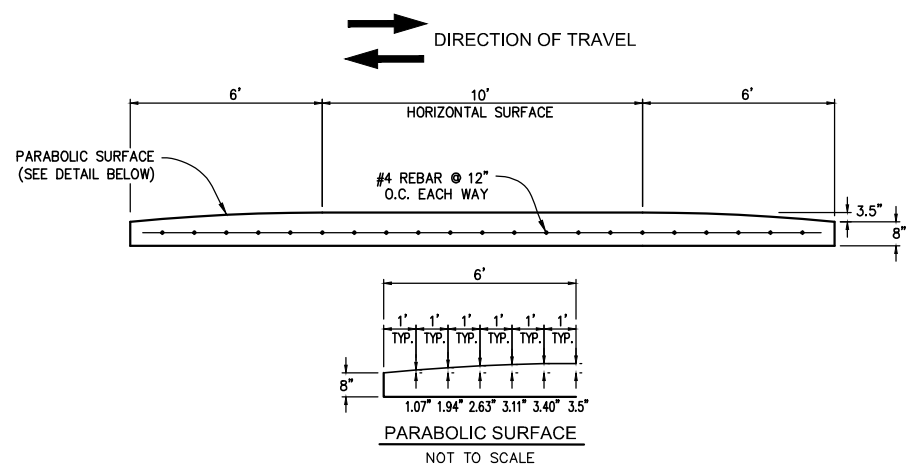


CURB OPENING DETAIL 1
NOT TO SCALE

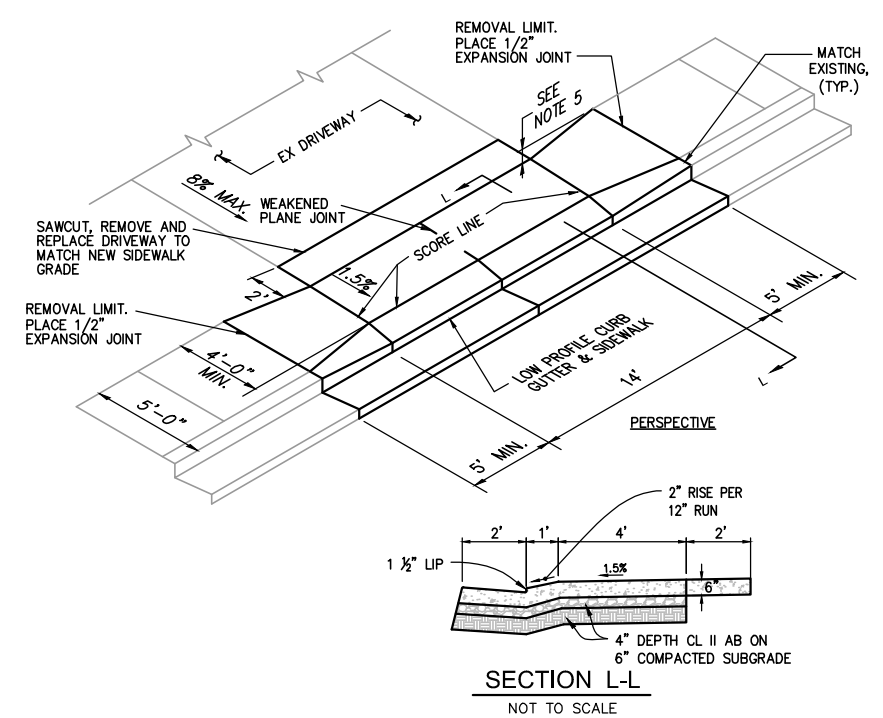


SECTION K-K
NOT TO SCALE

BUS TURNING APRON DETAIL 2
NOT TO SCALE

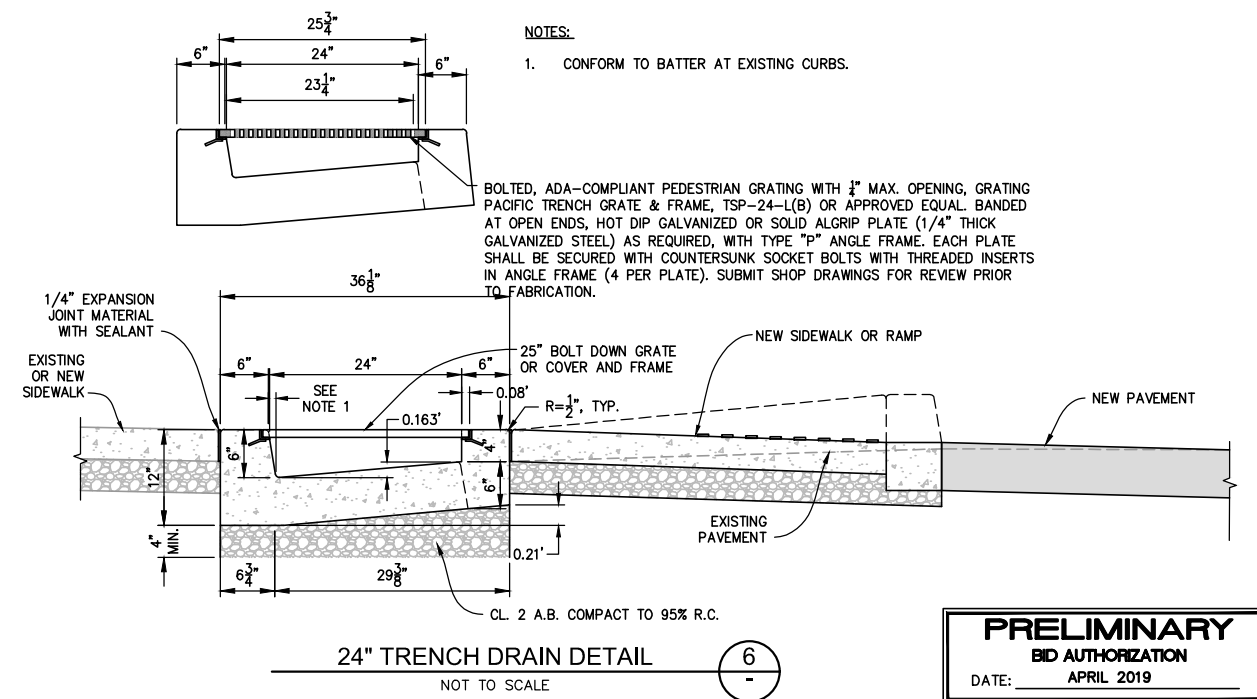


CONCRETE SPEED HUMP DETAIL 4
NOT TO SCALE

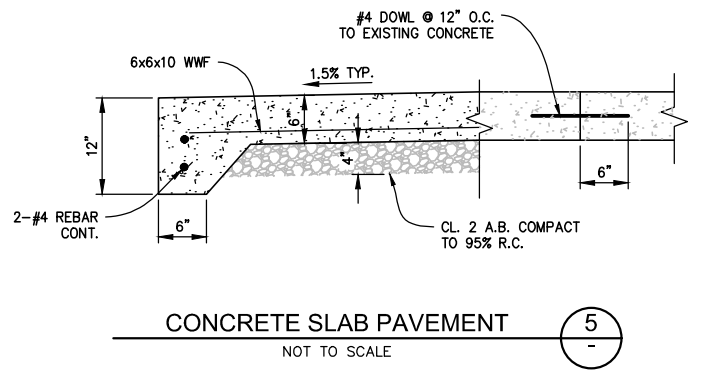


- NOTES:**
1. CONSTRUCT CONCRETE DRIVEWAY PER CITY OF WHEATLAND CONSTRUCTION STANDARDS.
 2. SCORE LINES SHALL BE 1/4" DEEP AND FORM A SQUARE PATTERN.
 3. APPLY LIGHT BROOM FINISH TO SURFACE OF WALK AT A RIGHT ANGLE WITH THE STREET. BROOM FINISH CURB AND GUTTER PARALLEL WITH STREET.
 4. ALL EDGES SHALL HAVE 1/2" RADIUS.
 5. DEPRESS BACK EDGE OF DRIVEWAY AS REQUIRED BELOW BACK EDGE OF NORMAL SIDEWALK TO MEET SLOPE CONSTRAINTS.

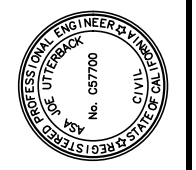
EMERGENCY VEHICLE ACCESS DRIVEWAY DETAIL 3
NOT TO SCALE



24" TRENCH DRAIN DETAIL 6
NOT TO SCALE



CONCRETE SLAB PAVEMENT 5
NOT TO SCALE



PREPARED UNDER THE DIRECTION OF
 ASA JOE UTTERBACK, RCE C57700 DATE
 DESIGNED BY WJK/CLG DRAWN BY WJK/CLG REVIEWED BY DHS
 A.U.

Coastland Civil Engineering, Inc.
 11641 Blocker Dr. Ste 170, Auburn, CA 95603
 530.886.9829

CALIFORNIA
 HOOPER STREET IMPROVEMENT PROJECT
 CITY OF WHEATLAND
DETAILS

PROJECT NUMBER 77-4027
 DRAWING DATE APRIL 2019
 SHEET NUMBER 4 OF 8

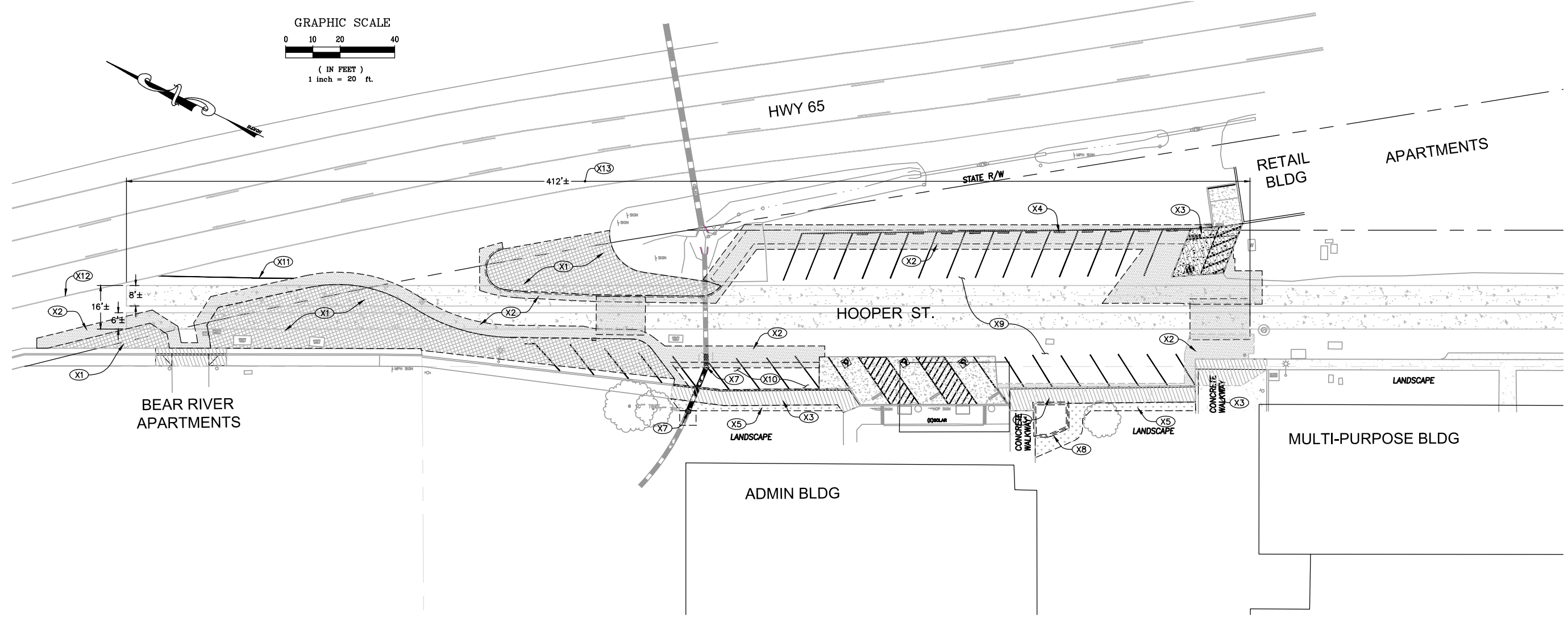
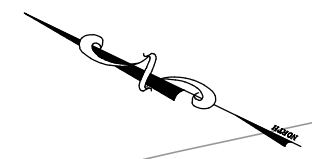
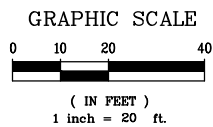
PRELIMINARY
BID AUTHORIZATION
 DATE: APRIL 2019

Image: Wheatland Hooper St. Topo, Transport, Lanes, Group, I, I, Xref: C:\E-ENGINEERS\STW\GIS-PLAN\Map\774027_Tp.dwg, 7/14/2019, 12:41
 Path: F:\C:\30 Projects\774027 Hooper St\Map\774027 DEMO.dwg Layout Name: S11-5 Plot Date: Apr 18, 2019 at 12:41

FOR REDUCED PLANS, THE ORIGINAL SCALE IS IN INCHES

3
2
1
0

ORIGINAL PLOT DATE:



DEMOLITION NOTES

- (X1) SAWCUT & REMOVE PAVEMENT SECTION TO DEPTH OF 4".
- (X2) SAWCUT & REMOVE PAVEMENT SECTION FOR CURB, GUTTER, VALLEY GUTTER, SIDEWALK & ASPHALT CONCRETE CONFORM, DEPTH AS REQUIRED FOR CONSTRUCTION.
- (X3) SAWCUT & REMOVE CURB, GUTTER, SIDEWALK & PCC PAD TO LIMITS SHOWN ON THE PLANS.
- (X4) REMOVE & SALVAGE WHEELSTOPS, TYPICAL OF 13.
- (X5) REMOVE LAWN AS REQUIRED FOR NEW SIDEWALK CONSTRUCTION.
- (X6) REMOVE STORM DRAIN PIPE.
- (X7) REMOVE STORM DRAIN DROP INLET.
- (X8) EXISTING BRICK SEATWALL AND PLANTER TO REMAIN. PROTECT IN PLACE.
- (X9) REMOVE AND REPLACE EXISTING HMA SURFACING TO 2 INCH DEPTH.
- (X10) REMOVE AC AND BASE AS REQUIRED TO CONSTRUCT PCC PAD.
- (X11) REMOVE EXISTING 4" EDGELINE ON HOOPER ST.
- (X12) SEE SHEET 8 FOR STRIPING REMOVAL ON HWY 65.
- (X13) REMOVE EXISTING OLD HIGHWAY CONCRETE PAVEMENT WITHIN PROJECT EXCAVATION LIMITS. (APPROXIMATELY 8" - 10" THICK)

PRELIMINARY
BID AUTHORIZATION
 DATE: APRIL 2019



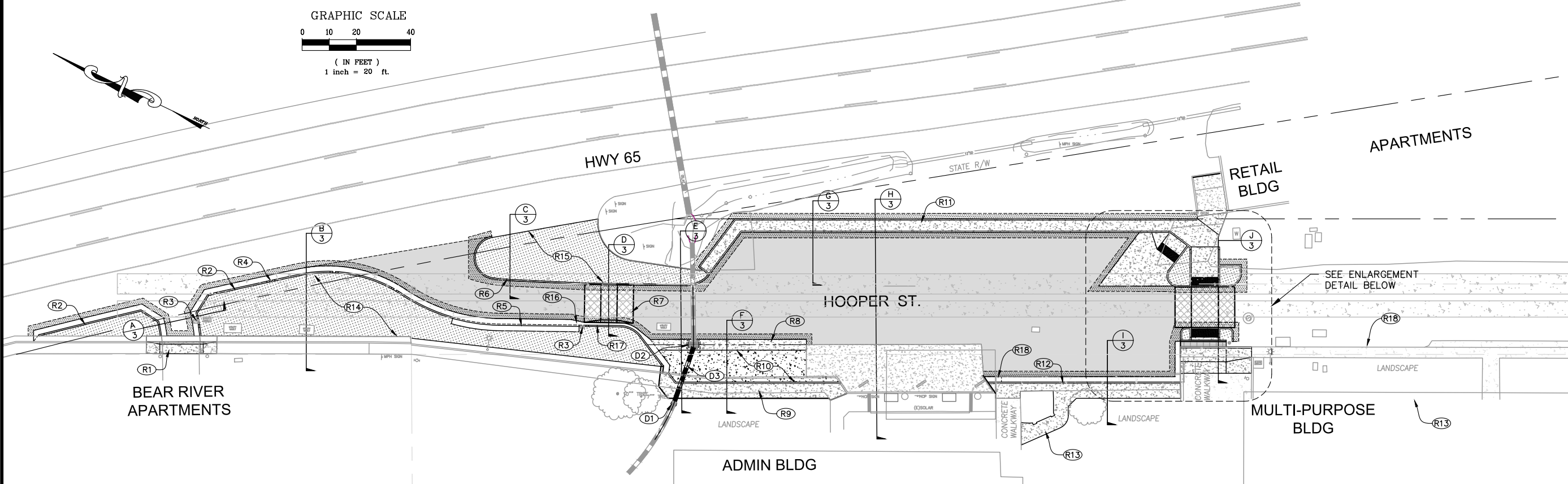
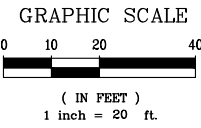
PREPARED UNDER THE DIRECTION OF
 ASA JOE UTTERBACK, RCE C57700 DATE
 DESIGNED BY A.U.J. DRAWN BY W.K./C.L.G. REVIEWED BY DHS

Coastland Civil Engineering, Inc.
 11641 Blocker Dr. Ste 170, Auburn, CA 95603
 530.886.9979 Fax

CALIFORNIA
 HOOPER STREET IMPROVEMENT PROJECT
 CITY OF WHEATLAND
DEMOLITION PLAN

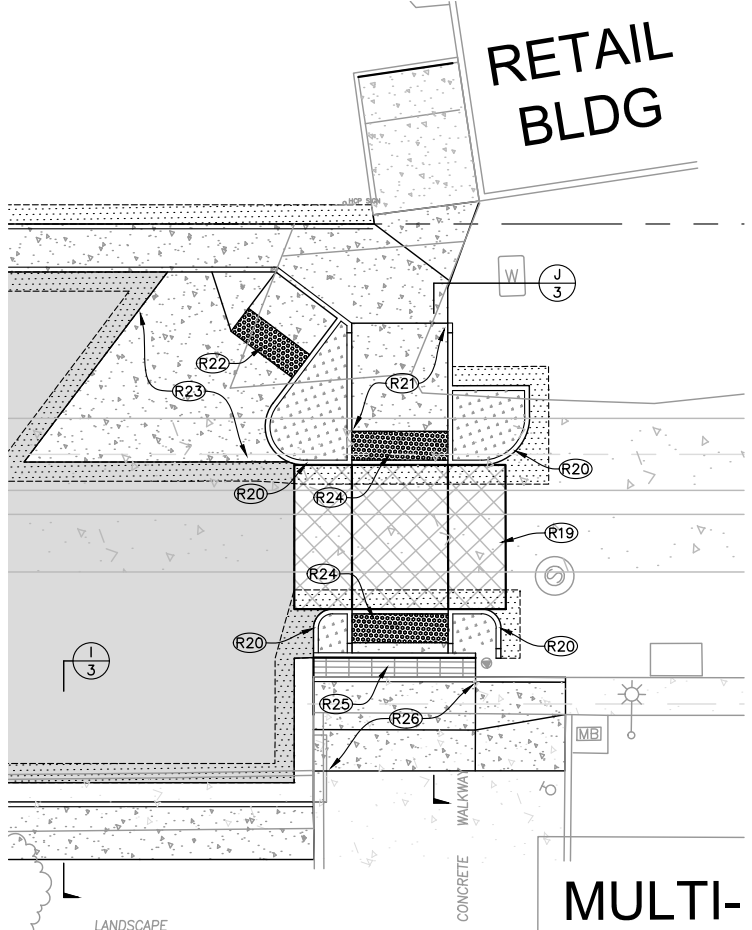
PROJECT NUMBER 77-4027
 DRAWING DATE APRIL 2019
 SHEET NUMBER 5 OF 8

ORIGINAL PLOT DATE:



FOR REDUCED PLANS, THE ORIGINAL SCALE IS IN INCHES

Project: Wheatland Hooper St. Improvements
Sheet: 02 - ENGINEERS STAFF - PLAN - 774027 - IP.dwg
Date: 11/17/2019 at 15:16
User: J. Utterback
Path: F:\C:\30\Projects\774027_Hooper St Improvements\Drawings\02-ENGINEERS STAFF-PLAN-774027-IP.dwg



- CONSTRUCTION NOTES:**
- (D1) CONSTRUCT TYPE GCP INLET WITH TYPE 36RX GRATE.
 - (D2) CONSTRUCT TYPE G1 INLET WITH TYPE 24-13 OR 24-10C GRATE PER CALTRANS STD. PLANS.
 - (D3) CONSTRUCT 12" STORM DRAIN PIPE.
 - (R1) CONSTRUCT EMERGENCY VEHICLE ACCESS DRIVEWAY PER DETAIL — $\frac{3}{4}$
 - (R2) CONSTRUCT CURB & GUTTER PER SECTION B.
 - (R3) CONSTRUCT CURB & GUTTER AT UTILITY CONFLICT PER DETAIL — $\frac{1}{4}$
 - (R4) PROVIDE CURB OPENING PER DETAIL — $\frac{1}{4}$
 - (R5) CONSTRUCT BUS TURNING APRON PER DETAIL — $\frac{2}{4}$
 - (R6) CONSTRUCT VERTICAL CURB PER SECTION C.
 - (R7) CONSTRUCT SPEED HUMP PER SECTION D & DETAIL — $\frac{4}{4}$
 - (R8) CONSTRUCT VALLEY GUTTER PER SECTION F.
 - (R9) CONSTRUCT VERTICAL CURB & SIDEWALK PER SECTION F.
 - (R10) REMOVE PAVEMENT AS REQUIRED AND PLACE 6" REINFORCED CONCRETE PER SECTION F AND DETAIL — $\frac{5}{4}$
 - (R11) CONSTRUCT VERTICAL CURBS & SIDEWALK PER SECTION G.
 - (R12) CONSTRUCT CURB, GUTTER & SIDEWALK PER SECTION I.
 - (R13) CONSTRUCT SIDEWALK PER CITY STD ST-14.
 - (R14) PLACE FILTER FABRIC AND MULCH PER SECTION B.
 - (R15) PLACE FILTER FABRIC AND MULCH PER SECTION C.
 - (R16) CONSTRUCT 5' GUTTER TRANSITION FROM 2' TO 1' WIDTH.
 - (R17) CONSTRUCT 6" CURB & GUTTER WITH 12" GUTTER PAN PER SECTION D.
 - (R18) CONSTRUCT 5' LONG GUTTER PAN SLOPE TRANSITION.
 - (R19) CONSTRUCT RAISED CONCRETE CROSSWALK PER SECTION J.
 - (R20) CONSTRUCT VERTICAL CURB PER CITY STD ST-13.
 - (R21) CONSTRUCT SIDEWALK PER CITY STD ST-14.
 - (R22) CONSTRUCT CURB RAMP WITH TRUNCATED DOMES PER CALTRANS STD PLAN RSP A88A, CASE G.
 - (R23) CONSTRUCT PCC PAD PER DETAIL — $\frac{5}{4}$
 - (R24) INSTALL TRUNCATED DOMES PER CALTRANS STD PLAN RSP A88A.
 - (R25) CONSTRUCT 24" TRENCH DRAIN PER DETAIL — $\frac{6}{4}$
 - (R26) REMOVE AND REPLACE EXISTING CONCRETE WALKWAY TO NEW GRADES. MATCH EXISTING EXPOSED AGGREGATE FINISH.

PREPARED UNDER THE DIRECTION OF
 ASA JOE UTTERBACK, RCE C57700
 DATE: APRIL 2019
 DESIGNED BY: AJU
 DRAWN BY: WJK/CLG
 REVIEWED BY: DHS

PROJECT NUMBER
77-4027

DRAWING DATE
APRIL 2019

SHEET NUMBER
6 OF 8

PRELIMINARY
BID AUTHORIZATION
DATE: APRIL 2019

PROJECT NUMBER
77-4027

DRAWING DATE
APRIL 2019

SHEET NUMBER
6 OF 8



Coastland Civil Engineering, Inc.
11641 Blocker Dr. Ste 170, Auburn, CA 95603
530.886.9979 Fax

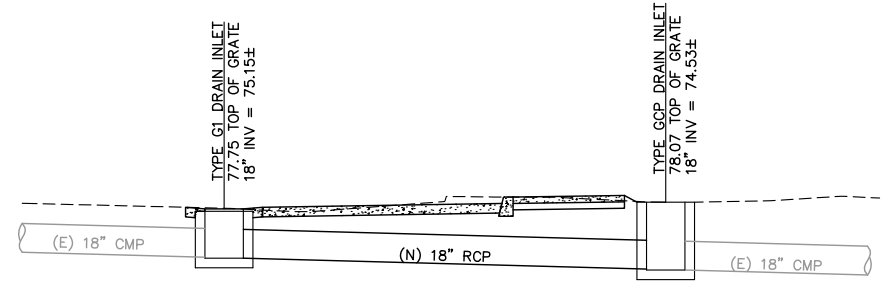
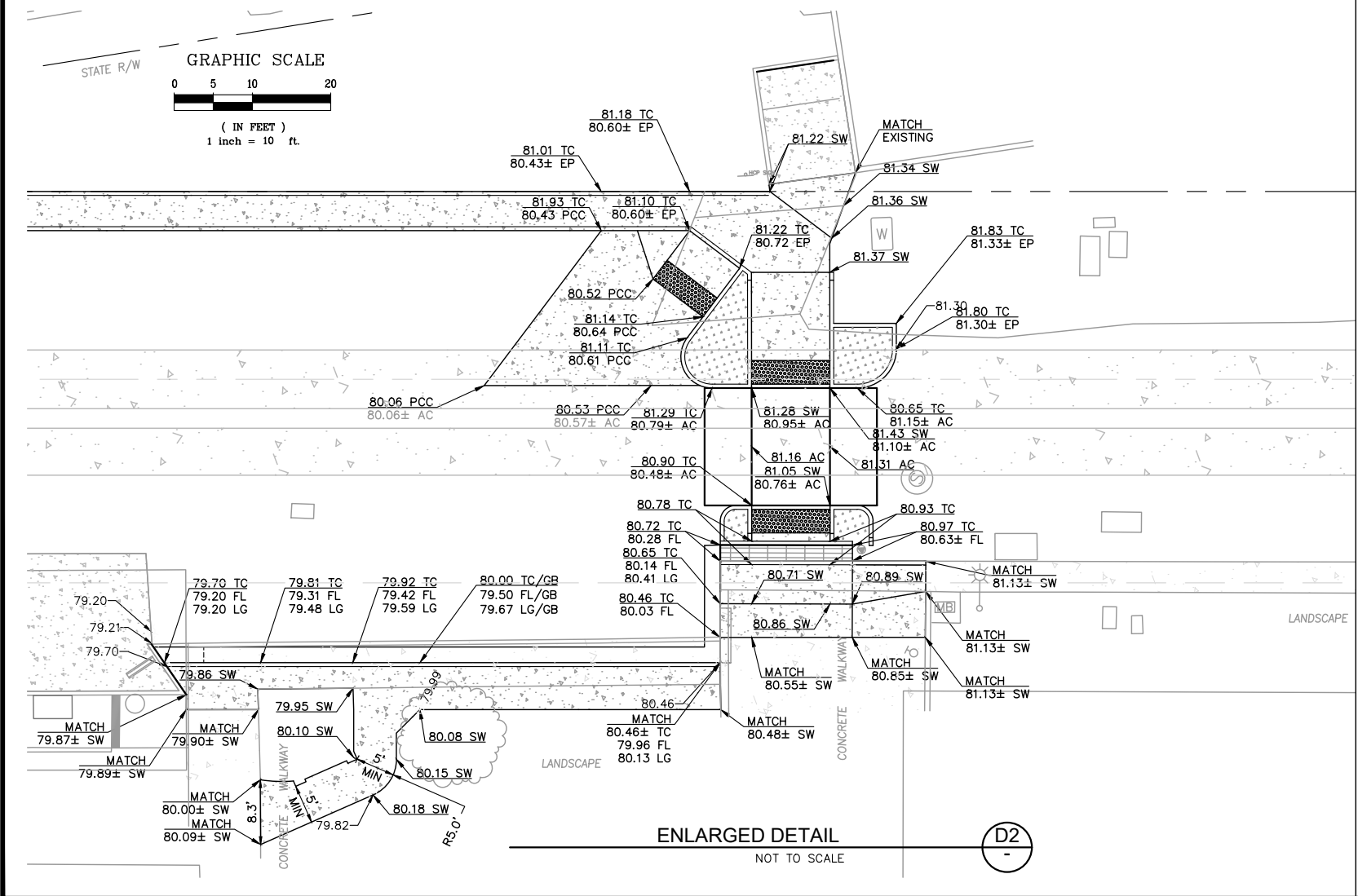
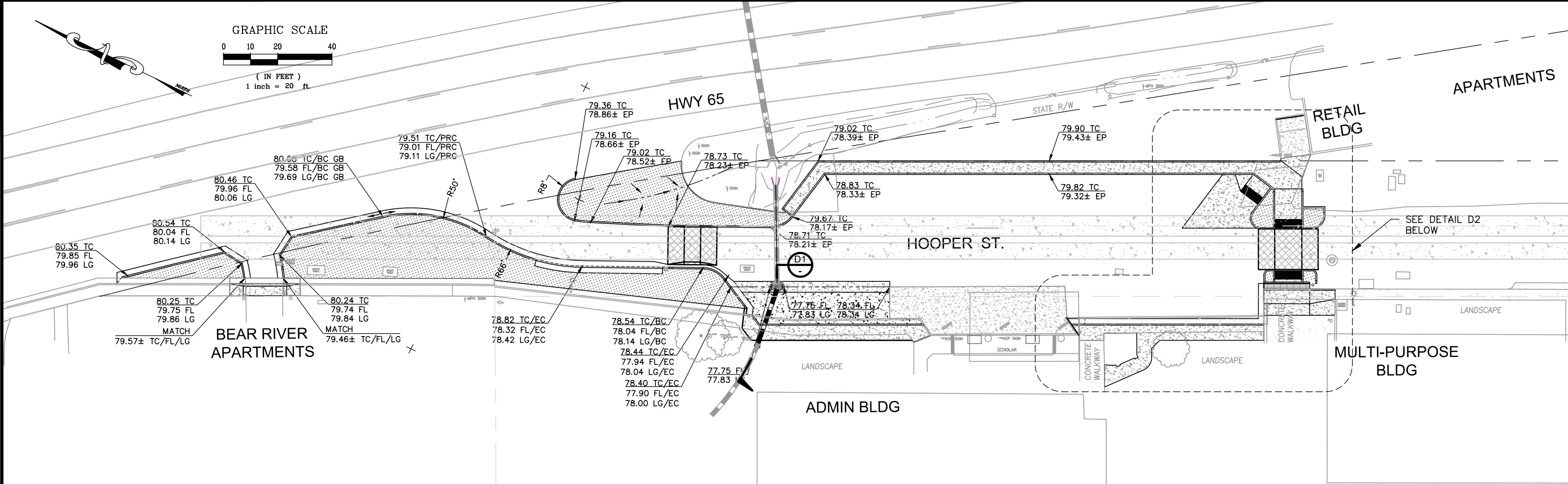
HOOPER STREET IMPROVEMENT PROJECT
 CITY OF WHEATLAND
 CALIFORNIA
SITE PLAN

Image: Wheatland Hooper St. Topo, Transparenc...
 Path: F:\Cadd\30 Projects\174027 Hooper St\DWG\174027_S1.dwg
 User: J...
 Date: Apr 17, 2019 at 12:16

FOR REDUCED PLANS, THE ORIGINAL SCALE IS IN INCHES

3
2
1

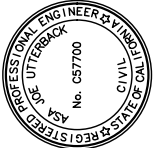
ORIGINAL PLOT DATE:



PROFILE SECTION OF STORM DRAIN SYSTEM 1 D1
NOT TO SCALE

PRELIMINARY
 BID AUTHORIZATION
 DATE: APRIL 2019

PREPARED UNDER THE DIRECTION OF
 ASA JOE UTTERBACK, RCE C57700 DATE
 DESIGNED BY AJU
 DRAWN BY WJK/CLG
 REVIEWED BY DHS



HOOPER STREET IMPROVEMENT PROJECT
 CITY OF WHEATLAND
 CALIFORNIA

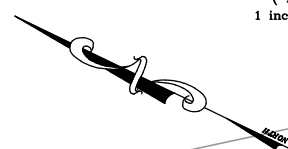
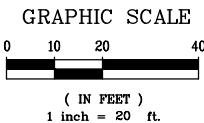
GRADING & DRAINAGE PLAN

PROJECT NUMBER
77-4027

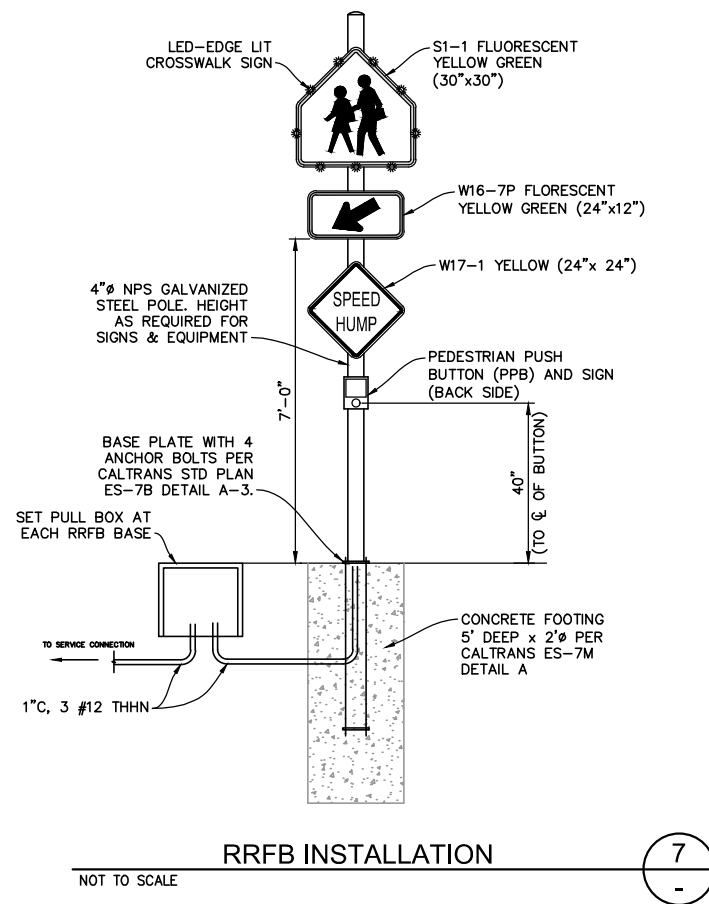
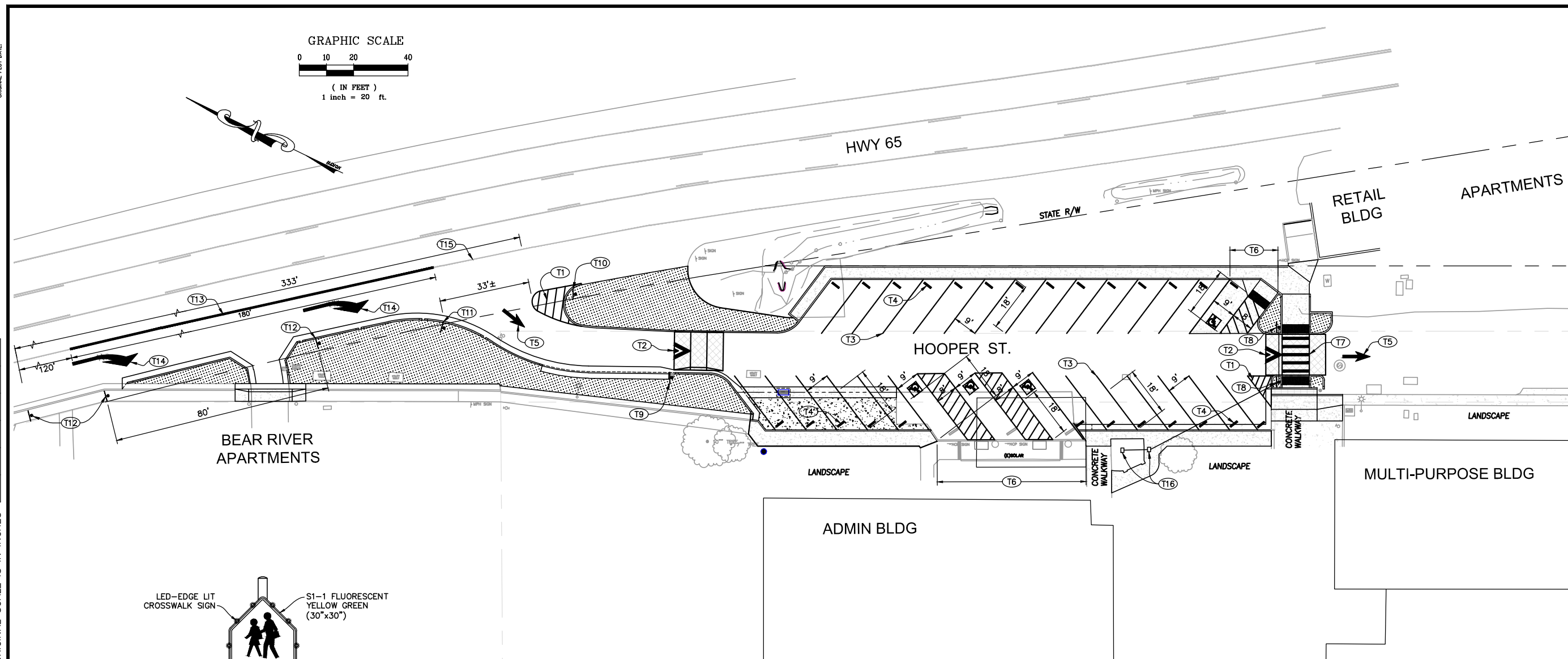
DRAWING DATE
APRIL 2019

SHEET NUMBER
7 OF 8

ORIGINAL PLOT DATE:

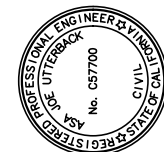


FOR REDUCED PLANS, THE ORIGINAL SCALE IS IN INCHES



STRIPING NOTES:

- (T1) 4" WHITE STRIPE SPACED 3' O.C. WITH WHITE BORDER.
- (T2) SPEED HUMP MARKING PER CALIFORNIA MUTCD 3B-29.
- (T3) 4" WHITE PARKING STRIPE, TYPICAL.
- (T4) WHEEL STOP PER CALTRANS STD PLAN RSP A90A.
- (T5) 10' TYPE I ARROW PER CALTRANS STD PLAN A24A.
- (T6) ADA PARKING SPACE PER CALTRANS STD PLAN RSP A90A.
- (T7) YELLOW CONTINENTAL CROSSWALK PER CALTRANS STD PLAN A24F, 1' WIDE STRIPE SPACED 2' APART.
- (T8) RRFB SOLAR CROSSWALK SIGN WITH PUSHBUTTONS AND W17-1 "SPEED HUMP" SIGN PER DETAIL (7)
- (T9) W17-1 "SPEED HUMP" SIGN
- (T10) STREET NAME "HOOPER ST" PER CITY STD DETAIL ST-23
- (T11) W84(CA) "SPEED HUMPS AHEAD" SIGN
- (T12) X-R7-1 "NO PARKING ANYTIME" SIGN PER MUTCD. PLACE 5 SIGNS AT 80FT INTERVALS.
- (T13) 180' DETAIL 38A PER CALTRANS STD PLAN A20D.
- (T14) 24' TYPE III ARROW PER CALTRANS STD PLAN A24B.
- (T15) REMOVE 333' OF EXISTING DETAIL 27B EDGELINE.
- (T16) CONNECT TO EXISTING ELECTRICAL FOR SCHOOL LIGHTED SIGN. INSTALL CONDUIT AND PULL BOXES AS SHOWN TO SERVE NEW RRFB INSTALLATIONS.



PREPARED UNDER THE DIRECTION OF
ASA JOE UTTERBACK, RCE C57700 DATE
DESIGNED BY A.U.J.
DRAWN BY W.K./CLG
REVIEWED BY DHS

Coastland Civil Engineering, Inc.
11641 Blocker Dr. Ste 170, Auburn, CA 95603
530.886.9979 Fax

CALIFORNIA
HOOPER STREET IMPROVEMENT PROJECT
CITY OF WHEATLAND
SIGNING STRIPING PLAN

PROJECT NUMBER 77-4027
DRAWING DATE APRIL 2019
SHEET NUMBER 8 OF 8

PRELIMINARY
BID AUTHORIZATION
DATE: APRIL 2019

Image: Wheatland Hooper St. Topo, transparent, mosaic, group, lit; Xref: CCE-ENGINEERS STRIPING-P.LIN, dwg: 774027_T1.dwg, 774027_Layout.dwg
 Path: F:\C:\30 Projects\774027 Hooper St\Map\774027_Striping.dwg Layout Name: STRIPING Plot Date: Apr 17, 2019 at 10:14