



CITY OF WHEATLAND

CITY COUNCIL MEETING STAFF REPORT

September 13, 2022

SUBJECT: Adopt Resolution No. 31-22 declaring a drought condition, declaration of Stage 1-Water Watch, and setting a twenty percent conservation goal

PREPARED BY: Dane H. Schilling, City Engineer

Recommendation

City staff recommends adopting Resolution No. 31-22 declaring a drought condition, adopting Stage 1 water use restrictions per Chapter 13.54 of the Wheatland Municipal Code and adopting a 20% water conservation goal.

Background/Discussion

On March 28, 2022, Governor Newsom enacted Executive Order N-7-22 in response to statewide drought conditions. Among other things, the executive order instructs urban water suppliers to perform actions to achieve twenty percent in conservation when measured against 2020 water usage.

Although the City is not an urban water supplier and therefore is not subject to the Governor's executive order, Chapter 13.54 of the City's municipal code (adopted in 2015) sets forth the actions to be undertaken by the City during drought conditions, and the program groups water supply and conditions into five stages, with the "Normal" Stage used for normal water supply conditions and Stages 1 through 4 used for drought conditions of increasing severity.

The State of California is currently in a multi-year drought, and the City is fully dependent on a single ground water source - the South Yuba Ground Water Subbasin. Although the City's groundwater supply has been reduced by current drought, groundwater levels indicate a good supply and the aquifer has historically sustained sufficient levels through recent drought events.

Since the Wheatland area is in-fact experiencing a multi-year drought, the action prescribed by Section 13.54.020 of the municipal code is to enact a Stage 2-Water Alert. However, since the city is not experiencing a notable reduction in ground water levels or experiencing a water system shortage, the City Council at its August 9, 2022 meeting and after concluding the public hearing, directed staff to bring this item back to the City Council with an action item for of the lesser Stage 1-Water Watch.

Staff concurs and recommends that the City adopt a resolution acknowledging the drought conditions, declare a Stage 1 Water Watch in accordance with Section 13.54.040, and encourage customers to reduce water consumption by 20%.

A Stage 1 Water Watch includes the following mandatory water conservation measures and restrictions:

1. When washing down or spraying paved surfaces (including sidewalks, driveways, parking lots, and patios), buildings, structures, vehicles, boats or equipment with a hose, the hose must be equipped with a positive shut-off nozzle.
2. When irrigating with a sprinkler system, do not allow water to run off the property into the street or sidewalk or onto adjacent property and do not overspray onto non-targeted areas such as adjacent property, non-irrigated areas, hardscapes, streets, sidewalks or structures.
3. Landscape irrigation and watering is permitted only from 7 pm to 10 am.
4. Repair all water leaks within the water consumer's water and irrigation system within five days after written notification by the city unless other arrangements are made with the city manager.

See the City of Wheatland Water Conservation/Contingency Policy Matrix (Attachment 2) for more information.

Alternatives

The City Council may choose to modify the proposed actions or choose to not to take any of the proposed actions.

Fiscal Impact

A twenty percent reduction in municipal water use would lead to a reduction in water enterprise fund revenues. However, since the City's pricing structure begins with a base rate, only the consumption on an account in excess of the base rate usage would translate to reduced revenues. Also, the City's water production expenses (most notably electricity costs) would be reduced commensurate with reduced water production. Therefore, the overall percentage reduction in revenue is expected to be less than the actual percentage reductions in water consumption due to conservation.

Relatively minor costs associated with public outreach, monitoring, notifications, enforcement and other staff time may be incurred.

Attachments

1. Resolution
2. Water Conservation/Contingency Policy Matrix
3. Precipitation, Snowpack and Groundwater Supply Data

RESOLUTION NO. 31-22

**A RESOLUTION OF THE CITY COUNCIL OF THE CITY OF WHEATLAND
DECLARING A STAGE 1 DROUGHT CONDITION, ADOPTING WATER USE
RESTRICTIONS AND ADOPTING A TWENTY PERCENT CONSERVATION GOAL**

WHEREAS, the State of California is experiencing a multi-year drought; and

WHEREAS, on March 28, 2022, Governor Newsom enacted Executive Order N-7-22 in response to statewide drought conditions. Among other things, the executive order instructs urban water suppliers to perform actions to achieve twenty percent water conservation when measured against 2020 water usage; and

WHEREAS, the City's water conservation program, as set forth in Wheatland Municipal Code chapter 13.54, sets forth the actions to be undertaken by the City during drought conditions, and the program groups water supply and conditions into five stages, with the "Normal" Stage used for typical and sustainable water supply conditions and Stages 1 through 4 used for drought conditions of increasing severity; and

WHEREAS, on August 9, 2022, the City Engineer has informed the City Council of a multi-year drought condition within the City which is a qualifying event to declare a Stage 2 drought condition; and

WHEREAS, on August 9, 2022, the City Council conducted a noticed public hearing regarding this proposed resolution as required by law and has considered all public comments received concerning the subject matter of this resolution and subsequently directed city staff to bring the item back to the City Council for consideration as a Stage 1 drought condition.

NOW, THEREFORE IT IS HEREBY RESOLVED, ORDERED AND FOUND by the City Council of City of Wheatland, State of California, hereby:

1. Declares a water shortage emergency condition in accordance with Wheatland Municipal Code Chapter 13.54 and based on the current multi-year drought and imposes water usage restrictions in order to conserve the City's water supply.
2. Declares a Stage 1 drought condition under Wheatland Municipal Code sections 13.54.020 and 13.54.040, and implement the related water use restrictions. Accordingly, the City Manager is authorized and directed to enforce the water use restrictions in this resolution pursuant to Wheatland Municipal Code section 13.54.100.
3. Declares an annual water conservation goal of twenty percent when compared to annual water consumption in 2020, and directs the City Manager to conduct appropriate public outreach in efforts to achieve this goal.

This resolution shall take effect immediately and shall remain in full force and effect until the council, by resolution, determines that a different stage is appropriate or that the drought conditions have ceased.

PASSED AND ADOPTED by the City Council of City of Wheatland, State of California
this 13th day of September 2022, by the following vote:

AYES:

NOES:

ABSTAIN:

ABSENT:

Rick West, Mayor

ATTEST:

Lisa Thomason, City Clerk

CITY OF WHEATLAND WATER CONSERVATION/CONTINGENCY POLICY MATRIX

PER MUNICIPAL CODE CHAPTER 13.54

CONDITIONS / INDICATIONS	WATER STAGE				
	NORMAL	1 WATCH	2 ALERT	3 CRITICAL	4 EMERGENCY
	Normal water year.	Single year drought or other minimal water supply impairments.	Notable water supply reduction, multi-year drought or supply impairment.	Substantial water supply reductions, multi-year drought, water system impairment, water shortage declaration by State or Federal Government.	Catastrophic water supply reductions or water system impairment, multi-year drought, emergency declaration by State or Federal Government.
CONSERVATION GOALS	Voluntary Conservation.	10% Voluntary Conservation.	Up to 25% mandatory conservation.	Up to 30% mandatory conservation.	30% or higher mandatory conservation through complete cessation of water service.
STAFF TRAINING	No special training.	Initial training on requirements of Watch Stage.	Initial training on requirements of Alert Stage, plus monthly refresher sessions.	Initial training on requirements of Critical Stage, plus weekly refresher sessions.	Initial training on requirements of Emergency, weekly refresher sessions and daily communication with the City Manager.

CITY OF WHEATLAND WATER CONSERVATION/CONTINGENCY POLICY MATRIX

PER MUNICIPAL CODE CHAPTER 13.54

EDUCATION/ OUTREACH	WATER STAGE				
	NORMAL	1 WATCH	2 ALERT	3 CRITICAL	4 EMERGENCY
	None.	-Website. -Post voluntary conservation fliers.	-Website including % saved to date. -Post mandatory conservation fliers. -Direct mailers to customers. -Contact schools & higher water users in-person.	-Website including % saved to date. -Post mandatory conservation fliers. -Direct mailers to customers. -Contact schools & higher water users in-person.	-Website including % saved to date, per capita rationing (if any). -Post mandatory conservation fliers. -Direct mailers to customers. -Contact schools & higher water users in-person.
WASHING OF PAVED SURFACES	Allowed with flow control device.	Allowed with flow control device.	Allowed with flow control device.	Not Allowed.	Not Allowed.
HAND WATERING AND VEHICLE WASHING	Allowed	Nozzle with auto shut-off required	Nozzle with auto shut-off required	Nozzle with auto shut-off, only bucket wash vehicles	No vehicle washing allowed
LANDSCAPE WATER RUNOFF, OVERSPRAY OR INEFFICIENT USE	Encouraged against	Not allowed	Not allowed	Not allowed	Not allowed

CITY OF WHEATLAND WATER CONSERVATION/CONTINGENCY POLICY MATRIX

PER MUNICIPAL CODE CHAPTER 13.54

	NORMAL	1 WATCH	2 ALERT	3 CRITICAL	4 EMERGENCY
LANDSCAPE WATERING	No restrictions	Allowed any days between 7pm and 10am.	-Allowed two days per week. -Watering from midnight to 10am and 7pm to midnight.	-Allowed two days per week June through October, allowed one day per week November through May. -Watering from midnight to 10am and 7pm to midnight.	Not allowed except to preclude/prevent fire hazards as determined by the Fire Marshal
NURSERY PLANTS AND LIVESTOCK	No restrictions	Water anytime with handheld hose or drip irrigation. Otherwise water between 7pm and 10am	Water anytime with handheld hose or drip irrigation. Otherwise water between 7pm and 10am	Every other day between 7pm and 10am. No more than 10-minutes per area per day	Allowed to the minimum extent possible to sustain livestock and nursery stock (as determined by the City)

CITY OF WHEATLAND WATER CONSERVATION/CONTINGENCY POLICY MATRIX

PER MUNICIPAL CODE CHAPTER 13.54

	WATER STAGE				
	NORMAL	1 WATCH	2 ALERT	3 CRITICAL	4 EMERGENCY
WATER IN RESTAURANTS	No restrictions	Voluntary participation in "water upon request"	Voluntary participation in "water upon request"	Water upon request only	Water upon request only
LEAK REPAIR	Repair in reasonable time frame	Repair within 5 days	Repair within 72 hours	Repair within 48 hours	Repair within 24 hours
CONSTRUCTION WATER	No restrictions	No restrictions	Use recycled or non-potable water when available	Use recycled or non-potable water when available	No construction water allowed without written authorization of the City Engineer
NEW SERVICES	No restrictions	No restrictions	No restrictions	New water services and "will serve letters" may be issued at the discretion of the City Engineer	New water services and "will serve letters" may be issued at the discretion of the City Engineer.
REPORTING	Complaint driven only	Complaint driven only	Complaints and patrols.	Complaints and patrols.	Complaints and patrols.
			Periodic random checks of individual water usage records.	Monthly random checks of individual water usage records.	Month checks of all water usage records.

CITY OF WHEATLAND WATER CONSERVATION/CONTINGENCY POLICY MATRIX

PER MUNICIPAL CODE CHAPTER 13.54

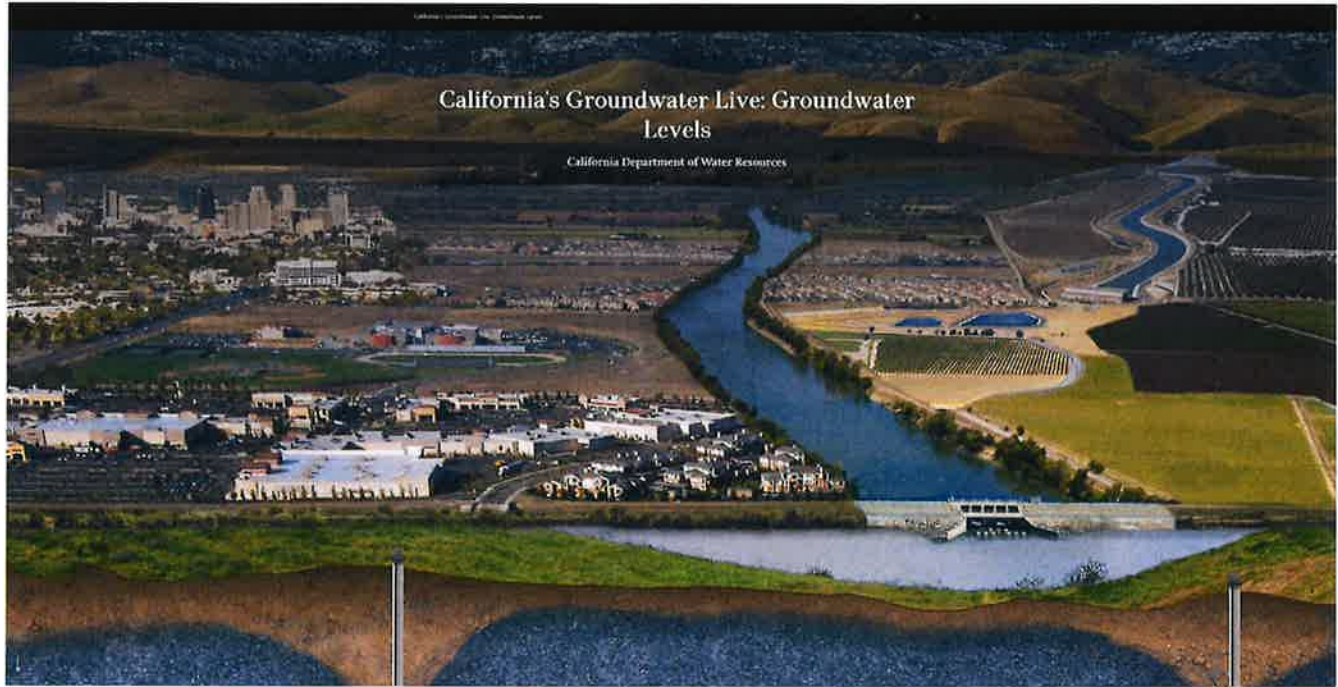
NORMAL	1 WATCH	2 ALERT	3 CRITICAL	4 EMERGENCY
--------	---------	---------	------------	-------------

ENFORCEMENT

General Approach: Each stage has a education/phase-in period in which only verbal warnings are given with an emphasis on education and outreach. Enforcement measures are progressive by stage and increase in severity by stage. City Manager will appoint a Water Conservation Supervisor who logs, tracks and reports all complaints, verbal warnings and written violations.

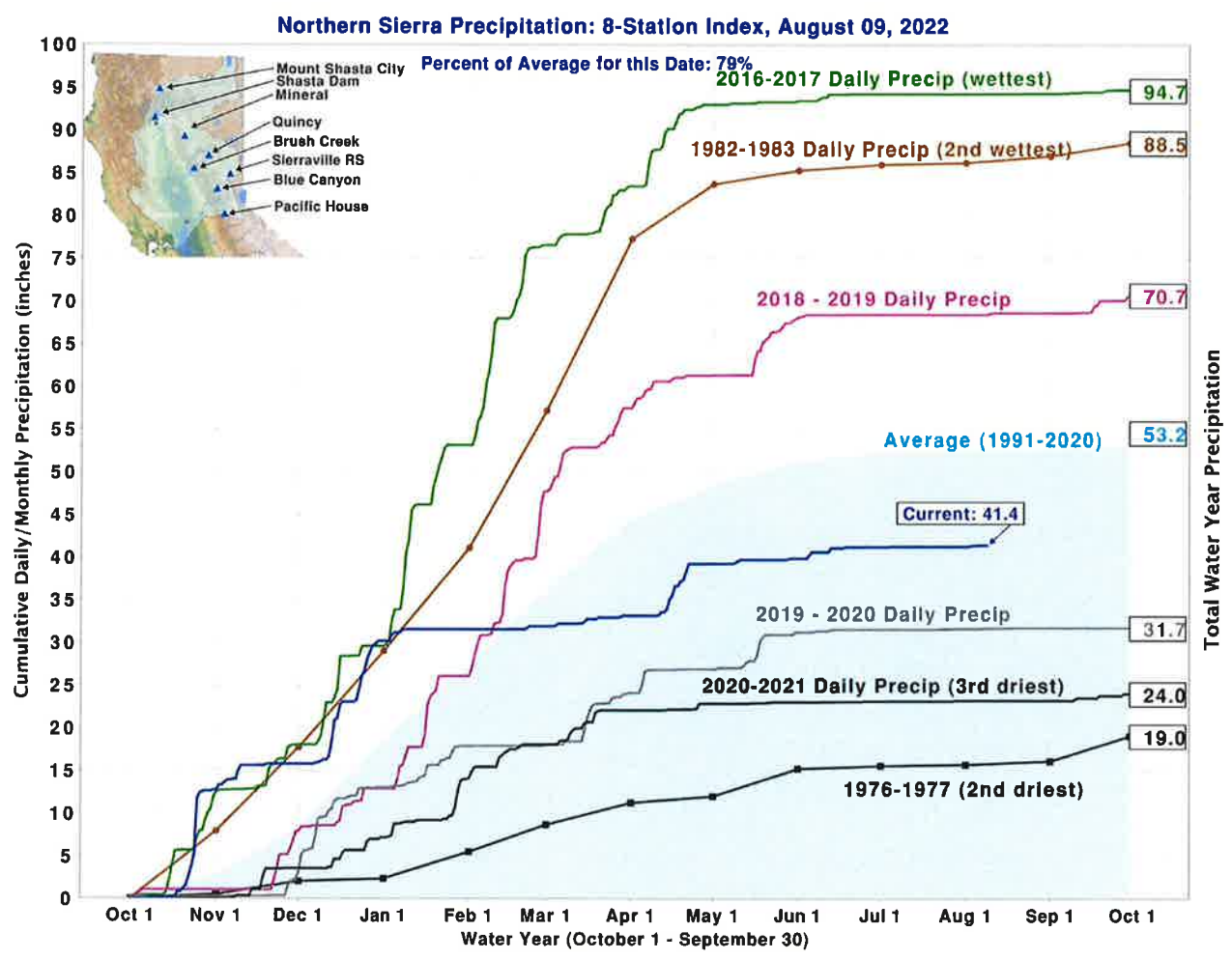
	30-day phase-in/ education period verbal warnings only.	30-day phase-in/ education period verbal warnings only.	10-day phase-in/ education period verbal warnings only.	No phase-in/ education period.
-Education, outreach, verbal warnings, door hangars & written warnings.	-Education, outreach, verbal warnings, door hangars & written warnings.	-Education, outreach, verbal warnings, door hangars & written warnings.	-Education, outreach, verbal warnings, door hangars & written warnings.	-Education, outreach, verbal warnings, door hangars & written warnings.
-Enforce per current municipal code up to \$25 per day after 4th written notice of violation.	-Citings up to \$50 after 3rd written notice of violation.	-Citings ranging from \$50 to \$100 per day plus court costs (if any) after 2nd written notice of violation as follows: 1st Citation \$50 2nd Citation \$75 3rd or more \$100	-Citings ranging from \$50 to \$200 per day plus court costs (if any) after 1st written notice of violation as follows: 1st Citation \$50 2nd Citation \$100 3rd or more \$200	-Citings ranging from \$50 to \$300 per day plus court costs (if any) after 1st written notice of violation as follows: 1st Citation \$50 2nd Citation \$100 3rd Citation \$200 4th or more \$300

- Possible suspension of service.

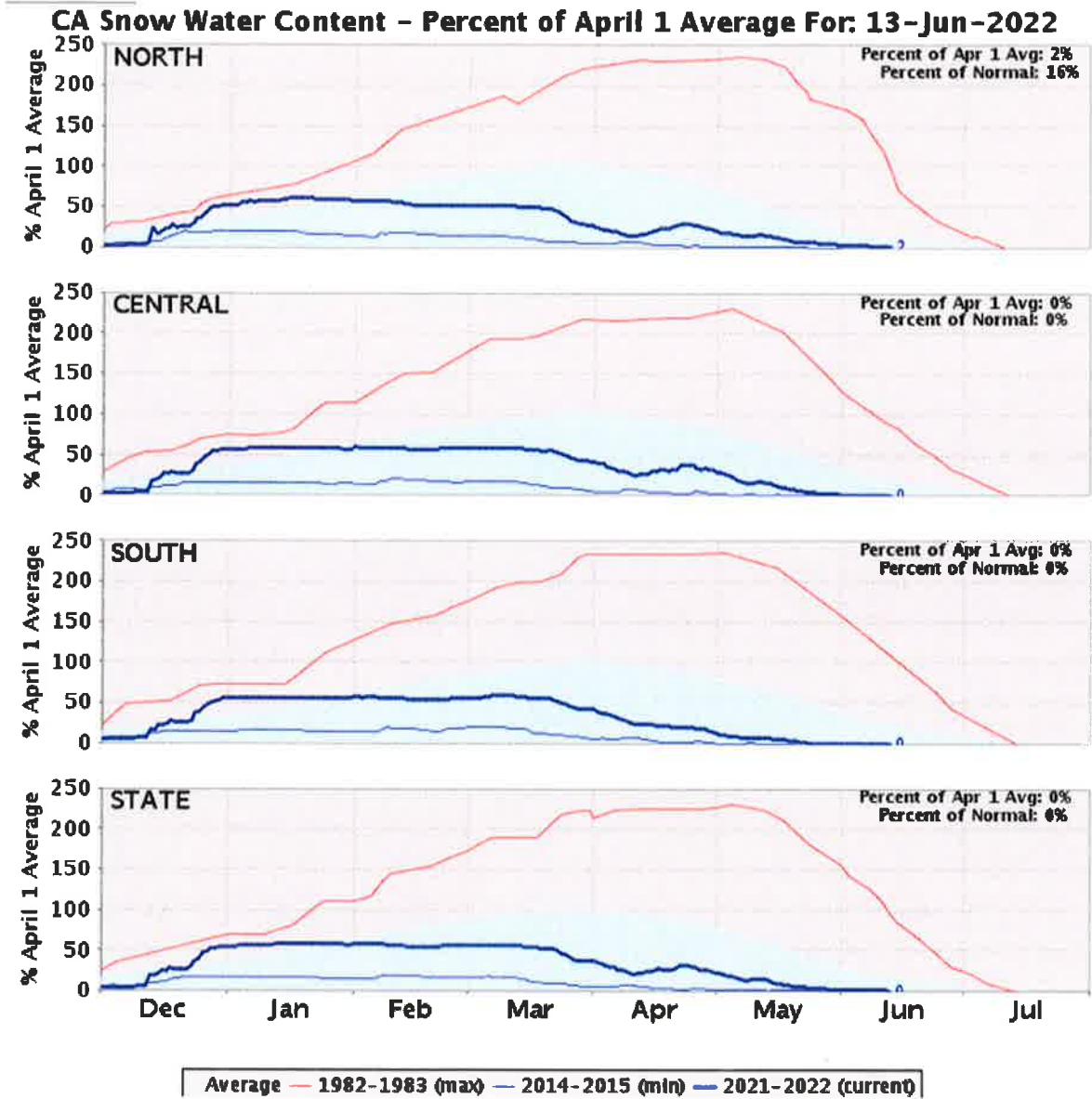


Water Supply Data – South Yuba Basin

August 2022



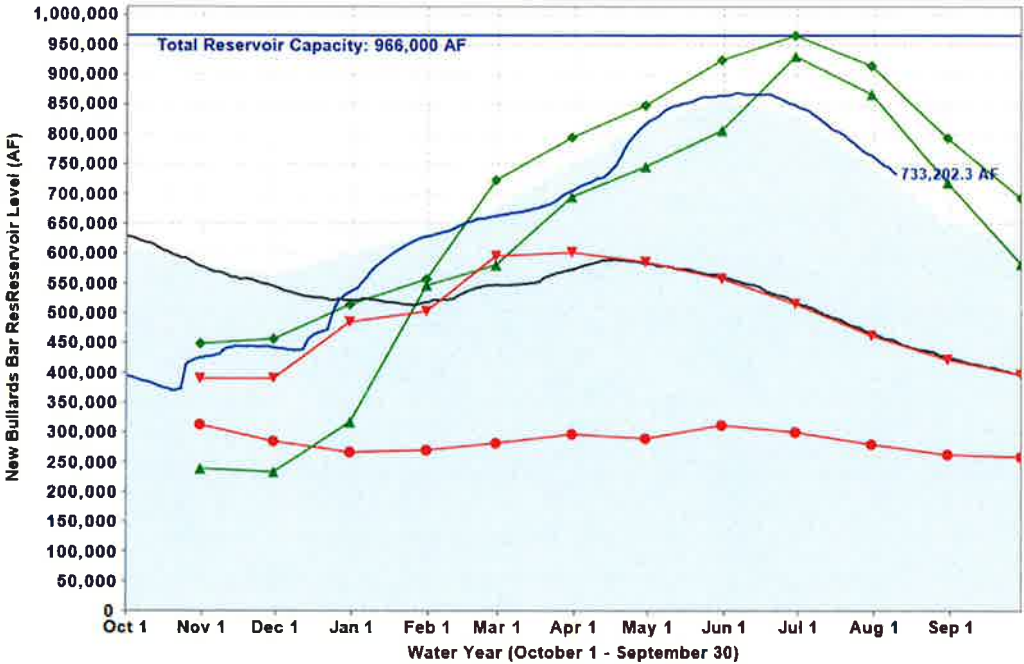
Precipitation – 79% of Average



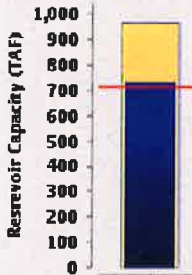
Statewide Snowpack - NorCal @ 16% of Normal



New Bullards Bar Res Levels: Various Past Water Years and Current Water Year, Ending At Midnight August 10, 2022



New Bullards Bar Res Conditions
(as of Midnight - August 10, 2022)

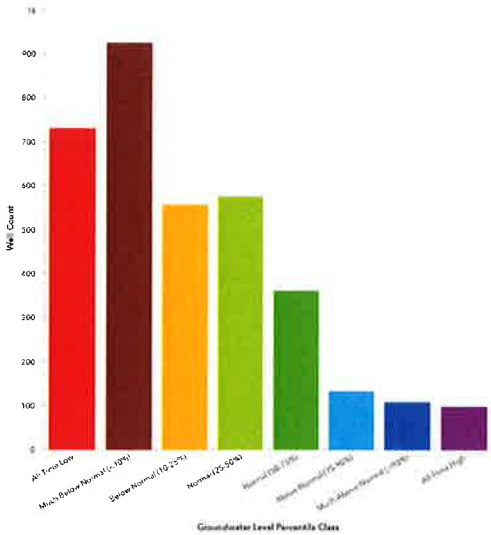
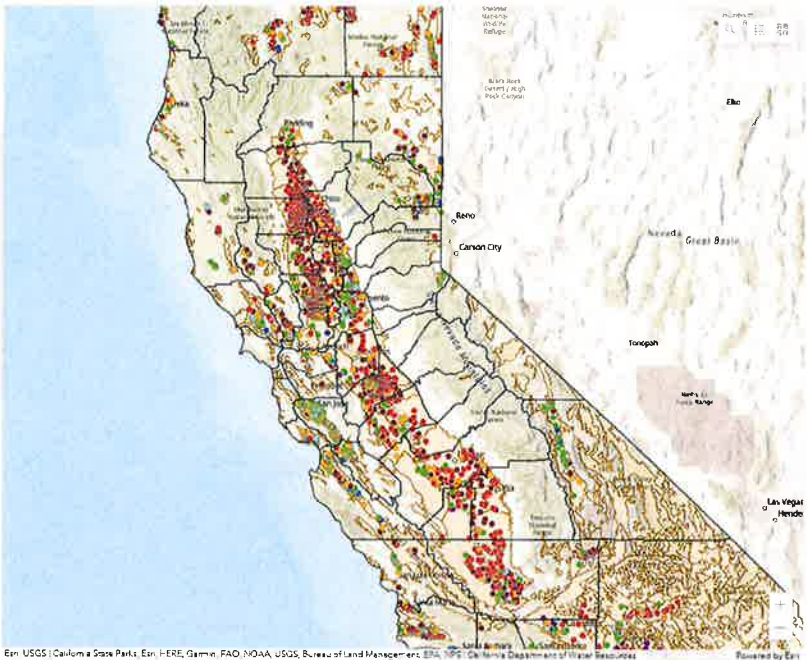


Current Level: 733,202.3 AF
76% (Total Capacity) | 103% (Historical Avg)

Historical Average — Total Reservoir Capacity — 1976-1977 (Driest) — 1977-1978 — 1982-1983 (Wettest)
— 2020-2021 — 2014-2015 — Current: 2021-2022

Reservoir Level – Bullard’s Bar

Water Supply Data – South Yuba Basin



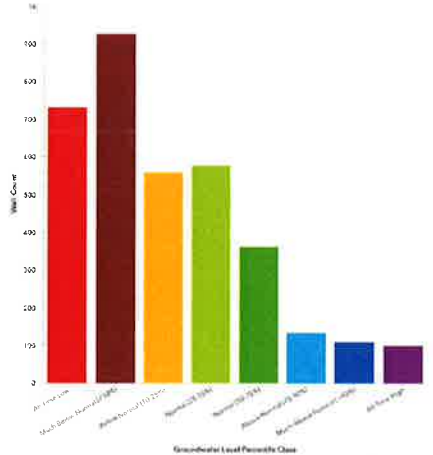
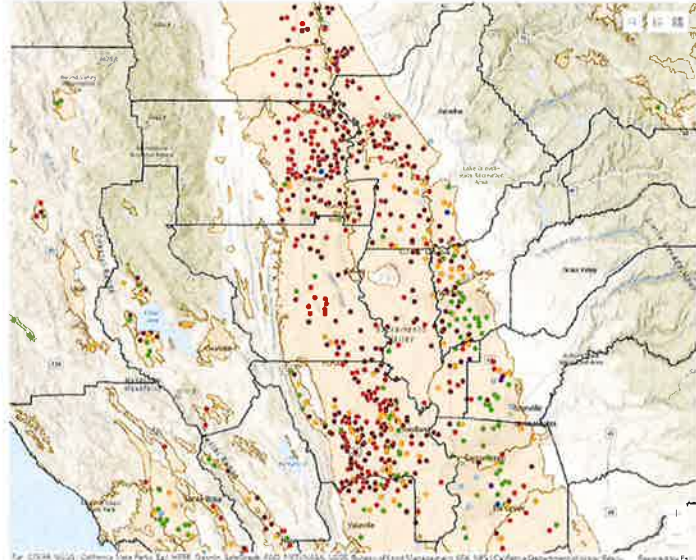
[Click here to learn how to use this dashboard](#)
[Click here to learn more about how this dashboard was created](#)
 Please email us at calgw@water.ca.gov to connect with the California's Groundwater Live Project Team

Monitoring Wells **3.5k** Total
 Monitoring Wells **3.5k** Based on Selection

Statewide Groundwater Levels

Current Groundwater Level Conditions
California's Groundwater Live

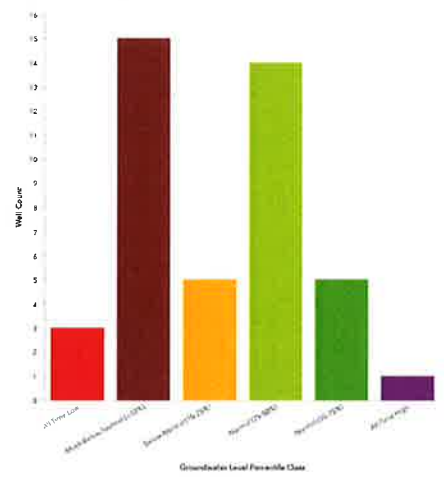
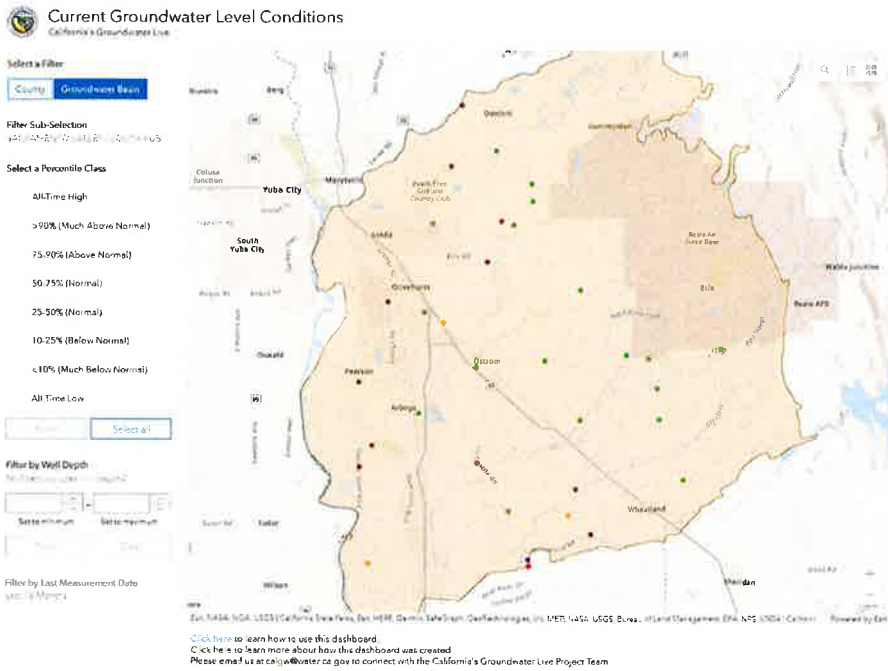
Select a Filter: **County** | **Groundwater Basin**
 Filter Sub-Selection: **All**
 Select a Percentile Class:
 All Time High
 >90% (Much Above Normal)
 75-90% (Above Normal)
 50-75% (Normal)
 25-50% (Normal)
 10-25% (Below Normal)
 <10% (Much Below Normal)
 All Time Low
 Filter by Well Depth:
 Filter by Last Measurement Date:



[Click here to learn how to use this dashboard](#)
[Click here to learn more about how this dashboard was created](#)
 Please email us at calgw@water.ca.gov to connect with the California's Groundwater Live Project Team

Monitoring Wells **3.5k** Total
 Monitoring Wells **3.5k** Based on Selection

North-State Groundwater Levels (magnified)



Monitoring Wells **3.5k** Total

Monitoring Wells **43** Based on Selection

South Yuba Basin – Current Groundwater Levels

Water Supply Data – South Yuba Basin

Seasonal Groundwater Level Changes (1, 3, 5, 10-Years)

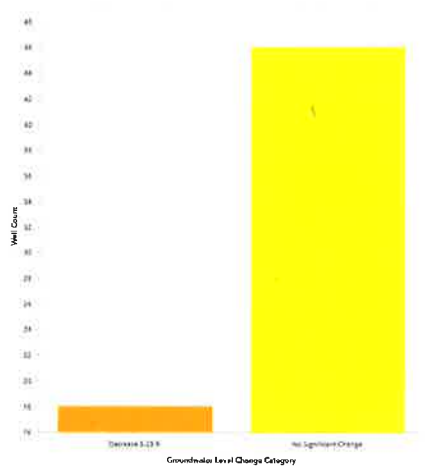
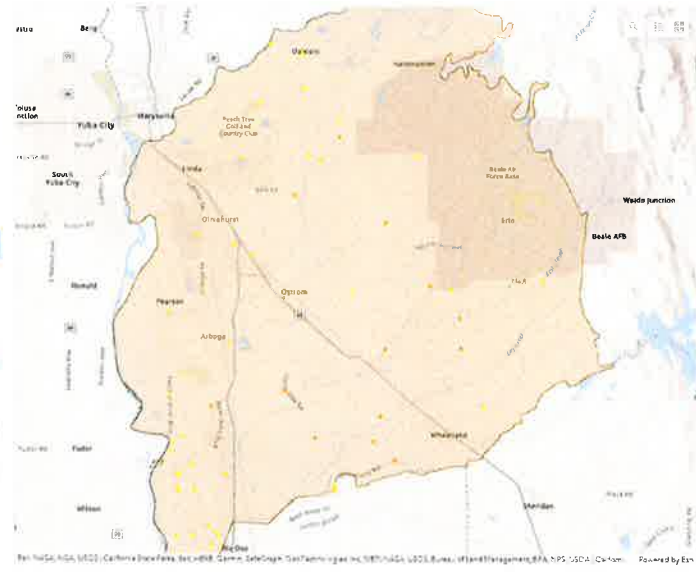
Select a Filter
 County: **Groundwater Basin**

Filter Sub-Selection
 Yuba City, South Yuba City

Select a Season
 Spring 2022
 Fall 2021

Select Number of Years
 1
 3
 5
 10

Filter by Well Depth
 Set to maximum, Set to minimum



Monitoring Wells **7k** Total

Monitoring Wells **64** Based on Selection

South Yuba Basin – Groundwater Changes Over 1-year

Seasonal Groundwater Level Changes (1, 3, 5, 10-Years)

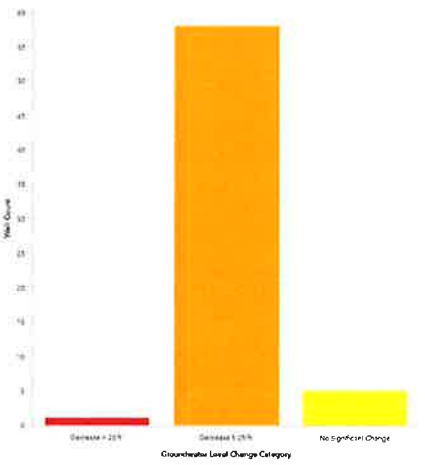
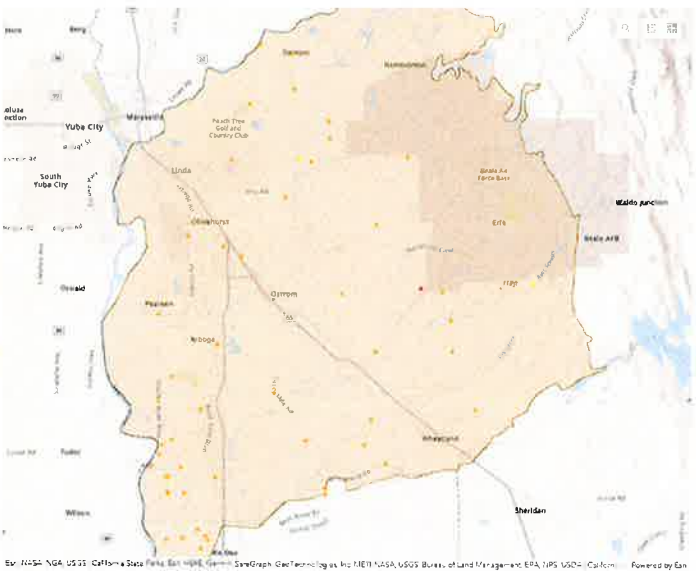
Select a Filter
 County: **Groundwater Basin**

Filter Sub-Selection
 Yuba City, South Yuba City

Select a Season
 Spring 2022
 Fall 2021

Select Number of Years
 1
 3
 5
 10

Filter by Well Depth
 Set to maximum, Set to minimum



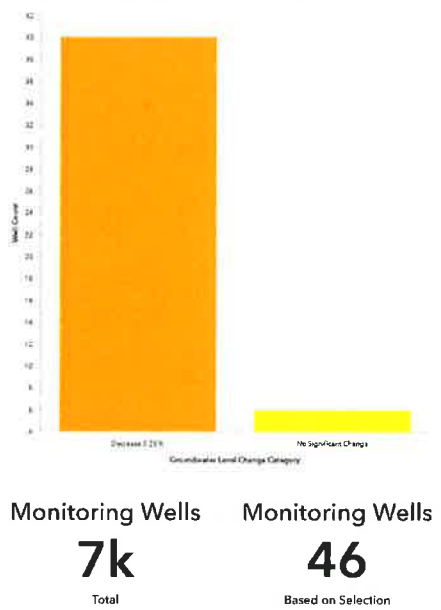
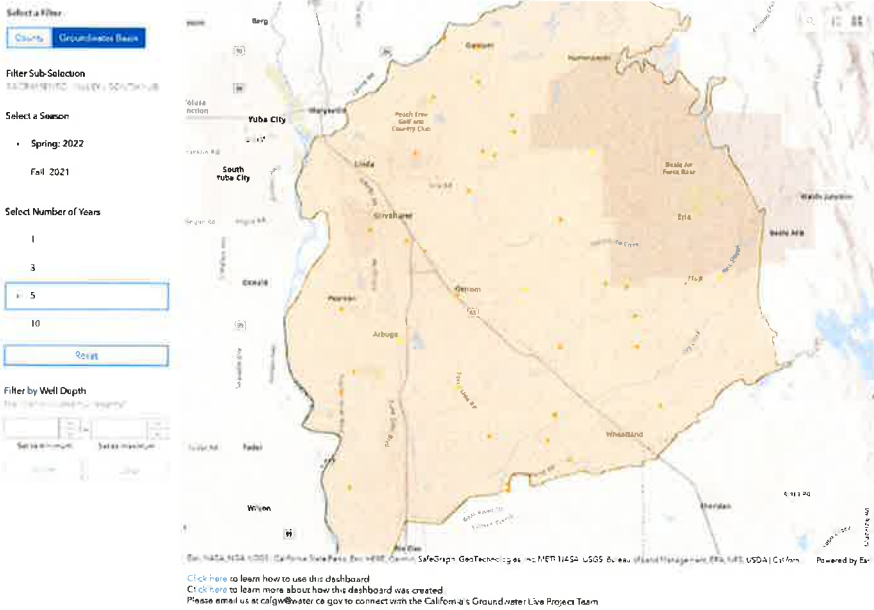
Monitoring Wells **7k** Total

Monitoring Wells **64** Based on Selection

South Yuba Basin – Groundwater Changes Over 3-years

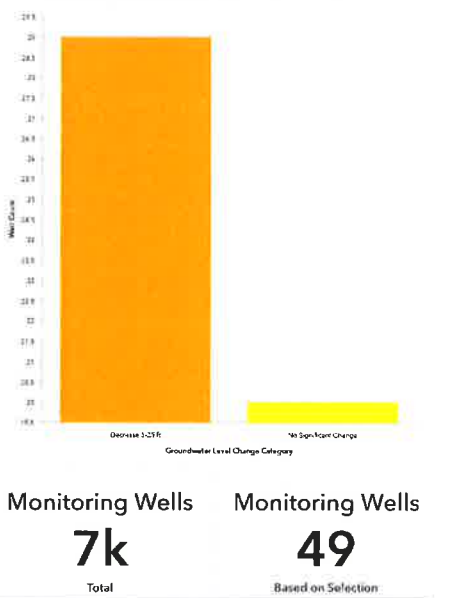
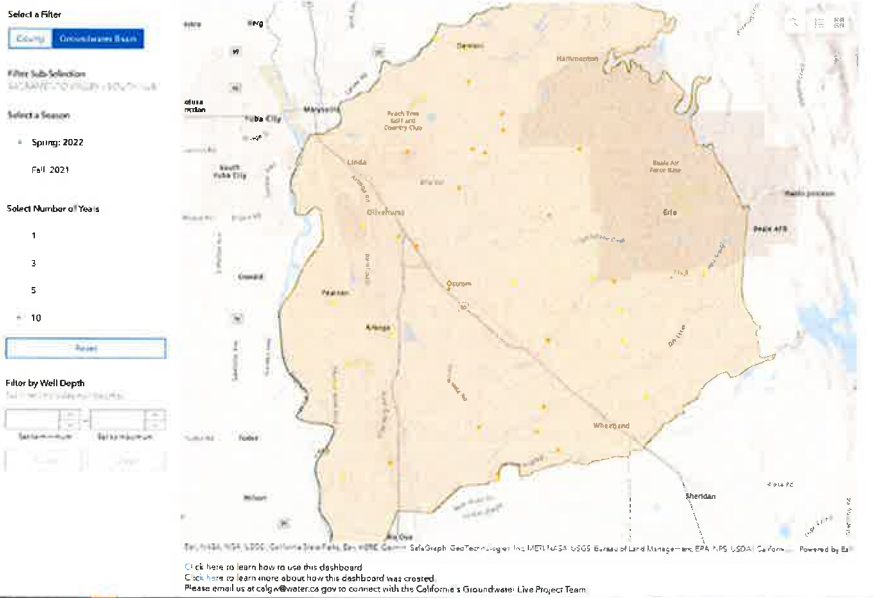
Water Supply Data – South Yuba Basin

Seasonal Groundwater Level Changes (1, 3, 5, 10-Years)

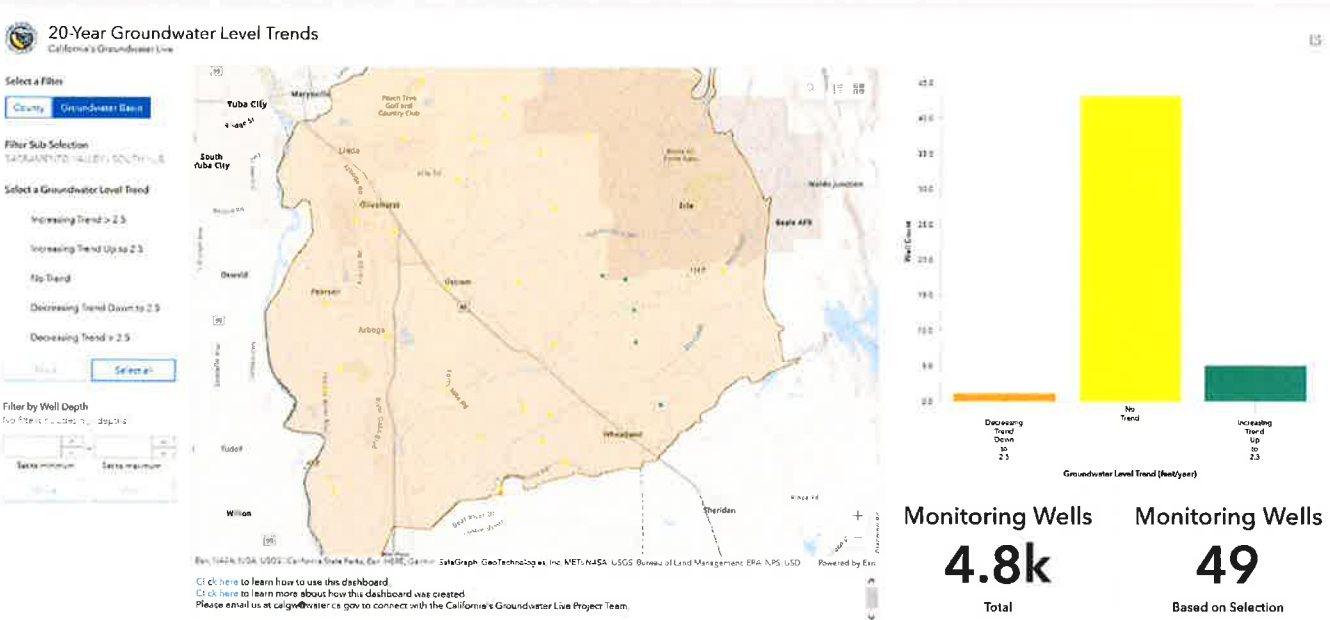


South Yuba Basin – Groundwater Changes Over 5-years

Seasonal Groundwater Level Changes (1, 3, 5, 10-Years)



South Yuba Basin – Groundwater Changes Over 10-years



South Yuba Basin – Groundwater Changes Over 20-years

