



# CITY OF WHEATLAND

## CITY COUNCIL MEETING STAFF REPORT

July 23, 2024

**SUBJECT:** 2024 Traffic Management Plan for Bishop's Pumpkin Farm Event

**PREPARED BY:** Bill Zenoni, City Manager  
Dane Schilling, City Engineer

### **Recommendation**

Receive the draft report entitled *Traffic Management Plan for the 2024 Bishop's Pumpkin Farm Event* prepared by the City Engineer.

### **Background/Discussion**

Since 2015, Wheatland has been implementing traffic management plans during each season that the Bishop's Pumpkin Farm is open to the public. The signs and traffic controls are placed prior to the beginning of the event, modified as needed, monitored throughout the event and removed at the end of the event.

On April 16, 2024, the City Council received an overview of City activities related to the Bishop's Pumpkin Farm for the 2023 season. The Bishop's Pumpkin Farm 2023 Season was in operation from Saturday September 9<sup>th</sup> to Sunday November 5<sup>th</sup>. For 2023, the City again utilized electronic sign boards on SR 65 and traffic barrels on Main Street to help manage the flow of traffic entering and exiting the Bishop's Pumpkin Farm. The second entrance to Bishop's Pumpkin Farm, adjacent to Wheatland High School, was opened on Saturdays and Sundays beginning September 24, 2023.

Additional traffic measures implemented in 2023 included the use of Police staff at the intersection of Main Street and SR 65 to direct and expedite traffic leaving Bishop's Pumpkin Farm after the Friday night fireworks. This new traffic control measure worked well and significantly reduced the traffic backup on Main Street. In addition, extra steps were taken to secure the closure of E Street at the corner of 1<sup>st</sup> Street by adding temporary fencing and more secure street barricades. This was implemented in response to a concern expressed at the public meeting that was held on August 16, 2023.

### 2024 Traffic Management Plan

The Bishop's Pumpkin Farm will open for the 2024 season on Saturday September 7<sup>th</sup> and will close on Monday November 11<sup>th</sup>. Each year prior to the upcoming season, City staff meets to plan for the upcoming pumpkin farm event and formulates a traffic management plan. The City Council reviews a draft traffic management plan in July

The 2024 Traffic Management Plan is essentially the same as the 2023 plan with minor adjustments based on input gathered during the 2023 event. The City will continue to provide visible law enforcement presence. Last year, the Friday evening exit was expedited by having Police Officers posted at the intersection of Main Street and SR-65 to direct traffic. This worked well and will be done again this year. Caltrans will also be requested to again implement alternative signal timing at the Main Street and First Street traffic signals to expedite the flow of traffic. The barrels placed on Main Street (which replaced traffic cones that were used in prior years) have worked well and will be utilized again this year. There were several instances where the barrels were displaced by drivers. We are looking at options for making these traffic barrels more secure and harder to move this year.

The Caltrans SR-65 Project is well underway and is expected to be completed by December. The Caltrans Project Manager and subcontractors have been advised of the increased traffic during the months of September and October and have indicated their desire to avoid traffic issues by halting construction during peak event traffic periods from Friday evening through Sunday afternoon.

Staff will review the details of the proposed 2024 Traffic Plan with the City Council at the July 23, 2024 meeting. Subsequent to review by the City Council, the Traffic Plan will be presented at a public meeting to be held in August.

### Fiscal Impact

The City's costs related to the management of traffic due to the Bishop Pumpkin Farm event traffic are tracked and reimbursed through the Pumpkin Farm Joint Admissions Fund established by agreement between the Pumpkin Farm and City.

### Attachment

1. Traffic Management Plan for the 2024 Bishop Pumpkin Farm Event



# City of Wheatland

## Traffic Management Plan for the 2024 Bishop Pumpkin Farm Event

June 26, 2024

Event Period:  
September 7 thru November 11, 2024

111 C Street Wheatland, California 95692

TELEPHONE (530) 633-2761

FAX (530) 633-9102

## Traffic Management Plan 2024 Bishop Pumpkin Farm Event

### **Introduction/Setting**

The Bishop Pumpkin Farm (BPF) is an agricultural oriented business located in the southwesterly corner of the City of Wheatland. BPF opened for business in 1973 by hosting school field trips in the fall. BPF has since expanded to include food and alcohol sales, amusement rides, shows, fireworks, fire pits, movie nights and other events. BPF has steadily grown in popularity and employs seasonal workers from the surrounding community.

The vast majority of visitors to BPF travel to the event via Highway 65 and then through City streets to reach the site. Initially, all traffic to the farm was via a single point of access at the westerly end of Fourth Street which turns into Roddan Lane (private street) and then Pumpkin Lane (private street). In recent years the main point of access has been at the end of Main Street and a secondary access via Wheatland Road during peak periods.

Although actual 2023 data are not available, it is estimated that the 2023 BPF attendance exceeded the prior year estimates of 310,000 guests and 81,400 vehicles over the 57-days spanning from the September 9<sup>th</sup> through November 5<sup>th</sup>, 2023.

Traffic flows are characterized as:

- Slower in September with a more even distribution of traffic.
- Intensifying consistently leading up to the last weekend in October with marked increases on Fridays, Saturdays and Sundays.
- School bus traffic enters only on weekdays, typically Monday through Thursday.
- Adverse weather conditions can significantly lower attendance during inclement weather but then cause a spike in attendance on the following weekend.
- Before-hours traffic includes employees and deliveries.
- Visitors will explore the use of any available routes in attempts to reduce travel time.
- Visitor trips are more intense/condensed in the mornings and after evening events.
- Special evening events Thursday through Sunday generate traffic surges exiting the site when the special events conclude.
- Admissions/parking processes at BPF can cause queueing that spills into city streets if adequate admission booths and parking staff are not provided.

Since 2015, Wheatland has been implementing a traffic control/management plan during the season. Temporary traffic controls and signs are placed prior to the event and monitored for the duration of the event.

City Staff meets several times before each season to discuss and plan for the upcoming event. Participants include the City Manager, Wheatland Police Department, Wheatland Fire Authority, Public Works Director and Superintendent, and the City Engineer. After formulating a draft plan for the season City Staff consults Caltrans Traffic Operations Staff and representatives from BPF in separate meetings. Staff consulted BPF representatives and no changes to the internal traffic circulation or access to the site are planned. The City will host a public meeting in August to gather public input. City staff will consult with Caltrans Traffic Operations staff to discuss the traffic management plan, highway traffic impacts and traffic signal timing. In 2023 Caltrans decided to add additional left-turn time of 5- to 9-seconds to the northbound turns on to Main Street to facilitate more incoming BPF visitors per traffic signal cycle.

It should be noted that a Caltrans project on Highway 65 through Wheatland known as "YUB 065 (R.52-1.77) (03-0H370 0315000151) Wheatland Donut Hole" is under construction through December 2024. The project includes new pedestrian ramps, new asphalt surfacing, and a new

## Traffic Management Plan 2024 Bishop Pumpkin Farm Event

traffic signal at McDevitt Drive. The Caltrans Project Manager and contractor have been advised of the potential for severe traffic delays if disruptive construction conditions and intense traffic flows from the event occur simultaneously. Caltrans and the contractor have indicated a desire to avoid that circumstance by accelerating the schedule to avoid disruptions to the event traffic, and to not allow construction during peak event traffic periods from Friday evening through Sunday afternoon.

The calendar of events for Wheatland High School will be checked for any events that may disrupt the use of the Wheatland Road gate new the high school football field.

Topics addressed in the development of this year's plan include:

- Ingress/egress of emergency vehicles.
- Police presence on Wheatland's streets
- Speed limits and speed controls
- Traffic signal timing adjustments
- Road closures
- Signs and sign placement
- Traffic control devices: barricades, signs, delineators, changeable message signs
- Caltrans encroachment permit
- Second entrance
- Inbound traffic from the west on Wheatland Road from Highway 70 and short-cutting down Oakley Lane.

The City's practice of advanced planning is helpful to a continuous improvement process that can provide opportunities to adapt and optimize the traffic management plan.

### **2024 Approach to Traffic Management**

The following description and the attached exhibits describe the City's approach to traffic management for the 2024 BPF season. For purposes of this year's plan, peak days are defined as all Saturdays and Sundays in October.

1. Essentially follow last year's plan with minor modifications.
2. Follow and comply with published regulations such as the California Manual for Uniform Traffic Control Devices (CA-MUTCD) and the California Vehicle Code.
3. Segregate to the extent possible vehicle trips generated from north and south of Wheatland, especially on peak days, to reduce traffic conflicts.
4. Use traffic signals at Main Street and First Street to organize, direct and meter traffic entering or exiting Wheatland via Highway 65.
5. Direct traffic to arterial streets to the greatest extent possible to take advantage of the wider streets and stronger pavement structure present in arterial streets.
6. Reduce vehicle conflicts and cut-through traffic from intersecting streets by restricting or strongly discouraging the use of non-arterial streets.
7. Provide a visible law enforcement presence. See details in the following section.
8. Discourage use of E Street from Main Street by placing road closed signs on the shoulders at E Street and Main Street (entire season).

Traffic Management Plan  
2024 Bishop Pumpkin Farm Event

9. Full closure (both directions) of E Street at First Street after 4pm on Fridays and re-open by 7am Monday (weekends the entire season).
10. Discourage use of E Street by placing road closed local traffic only signs along Highway 65 at Second Street, Third Street and Fourth Street.
11. Close the west end of Fourth Street at Roddan Lane (entire season).
12. Open a second/northerly entrance on Wheatland Road for peak days and divert trips from the north to the second entrance via the First Street traffic signal.
13. Encourage southbound visitors to use of the First Street signal and the Wheatland Road Gate with changeable message signs and static signage.
14. Request that Caltrans implement alternative signal timing at the Main Street and First Street traffic signals.
15. Use semi-portable barricades at full-street closures to allow for public safety response. (Note: Wheatland PD and Fire have confirmed that these types of barriers do not pose a significant hinderance to public safety response.)
16. Request that Caltrans modify signal timing at Main Street to allow more time for left turn from northbound Hwy-65 to westbound Main Street and right turns from eastbound Main Street to Hwy-65.
17. Request that Caltrans modify First Street signal timing as needed in coordination with modified flows from the Main Street signal. (Note: A planned Caltrans project on Hwy-65 may include installation of a new traffic signal at McDevitt Drive and traffic signal coordination of signals at Main, First and McDevitt.)
18. Employ the use of traffic barrels with "slow for the cone zone" signs on Main Street between E Street and the westerly end of Main Street for enhanced lane delineation and traffic calming.
19. Use temporary striping and restrict parking at the southwesterly corner of Main Street and Highway 65 to make a temporary dedicated right-turn lane to southbound Highway 65.
20. Add more road signs along eastbound Wheatland Road for visitors coming from the west on Wheatland Road and Oakley Lane. (peak days)
21. Add more road signs along westbound Wheatland Road to guide visitors to the second entrance on Wheatland Road. (peak days)
22. Add a changeable message sign at westbound First Street west of E Street to guide visitors to Wheatland Road entrance. (peak days)
23. Add a changeable message sign at eastbound Wheatland Road east of Oakley Lane of E Street to guide visitors to Wheatland Road entrance. (peak days)
24. Restrict turns at the exit of the Wheatland Road gate to right-turns only onto eastbound Wheatland Road/First Street.
25. Monitor the effectiveness of this plan through the season and make minor adjustments as may be appropriate and as approved by the City Engineer.

**Wheatland Police Department**

Friday evenings Wheatland Police Department (PD) will have one officer assigned from 4pm until closing to monitor traffic in the vicinity of the event and conduct patrols inside the event.

Traffic Management Plan  
2024 Bishop Pumpkin Farm Event

Depending on police department staffing levels on Saturday and Sunday, one officer may be assigned to monitor traffic in the vicinity of the event and one officer assigned foot patrol inside the event from opening until closing.

On Friday evenings at the conclusion of the fireworks, 2-3 officers will be posted at the intersection of Main Street and SR-65. The officers will stop traffic on SR-65 and allow traffic on eastbound Main Street exiting the event to flow without stopping. This will be done in 10–15-minute increments until the majority of the BPF traffic has exited the parking lot. Northbound and Southbound SR-65 traffic will be held during the egress for 10-15-minute increments then allowed to proceed briefly until stopped again as the traffic exiting from Main Street is the priority.

At the end of each week, PD will evaluate the traffic concerns and concerns within the event to determine if adjustments to staffing levels and patrol times are needed.

**Points of Contact**

During the event, public safety concerns, comments and inquiries should be directed to the following:

All Public Safety Emergencies	911
Police Non-Emergency (dispatch)	530-633-2821
Fire Non-Emergency	530-633-0861
Public Works After 5pm and Weekends	530-633-0926
Public Works Normal Business Hrs. (M-Th)	530-633-2761

**Conclusion**

To the greatest reasonable extent and under the direction of the City Engineer the City will: 1) implement this traffic management plan as described herein, 2) monitor conditions during the event, and 3) make minor adjustments to the plan as needed during the event to address any issues or unforeseen circumstances. Any substantial changes to the plan will require the approval of the City Engineer and written modification of this plan.

This plan has been prepared under my responsible charge in coordination with and with input from other City departments.



Dane H. Schilling, PE  
City Engineer  
City of Wheatland

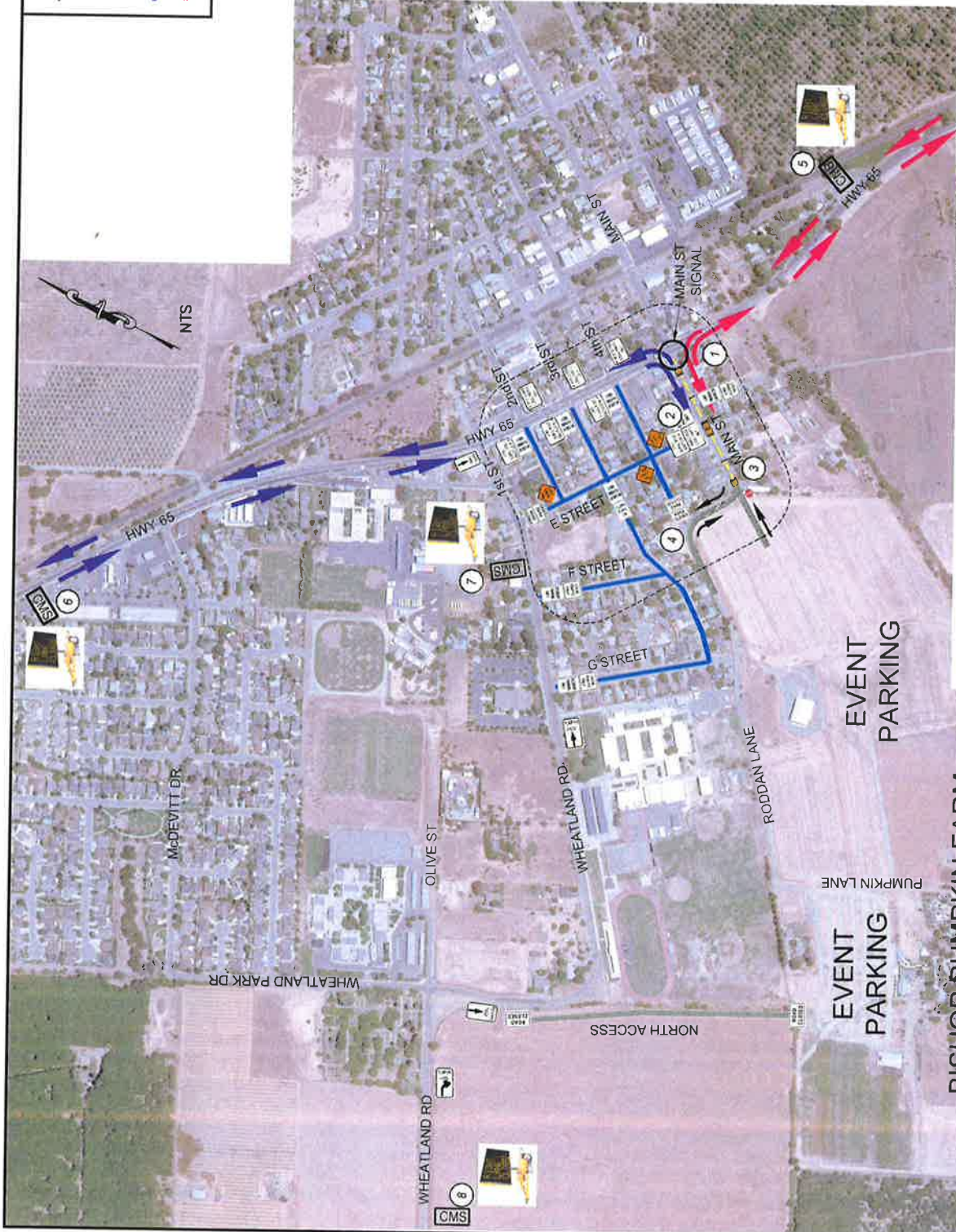
Attachments: 2024 BISHOP PUMPKIN FARM TRAFFIC HANDLING PLAN (3 pages)

**LEGEND**

- STREET RESTRICTED TO LOCAL TRAFFIC ONLY
- CHANGEABLE MESSAGE SIGN
- TRAFFIC TO/FROM NORTH
- TRAFFIC TO/FROM SOUTH

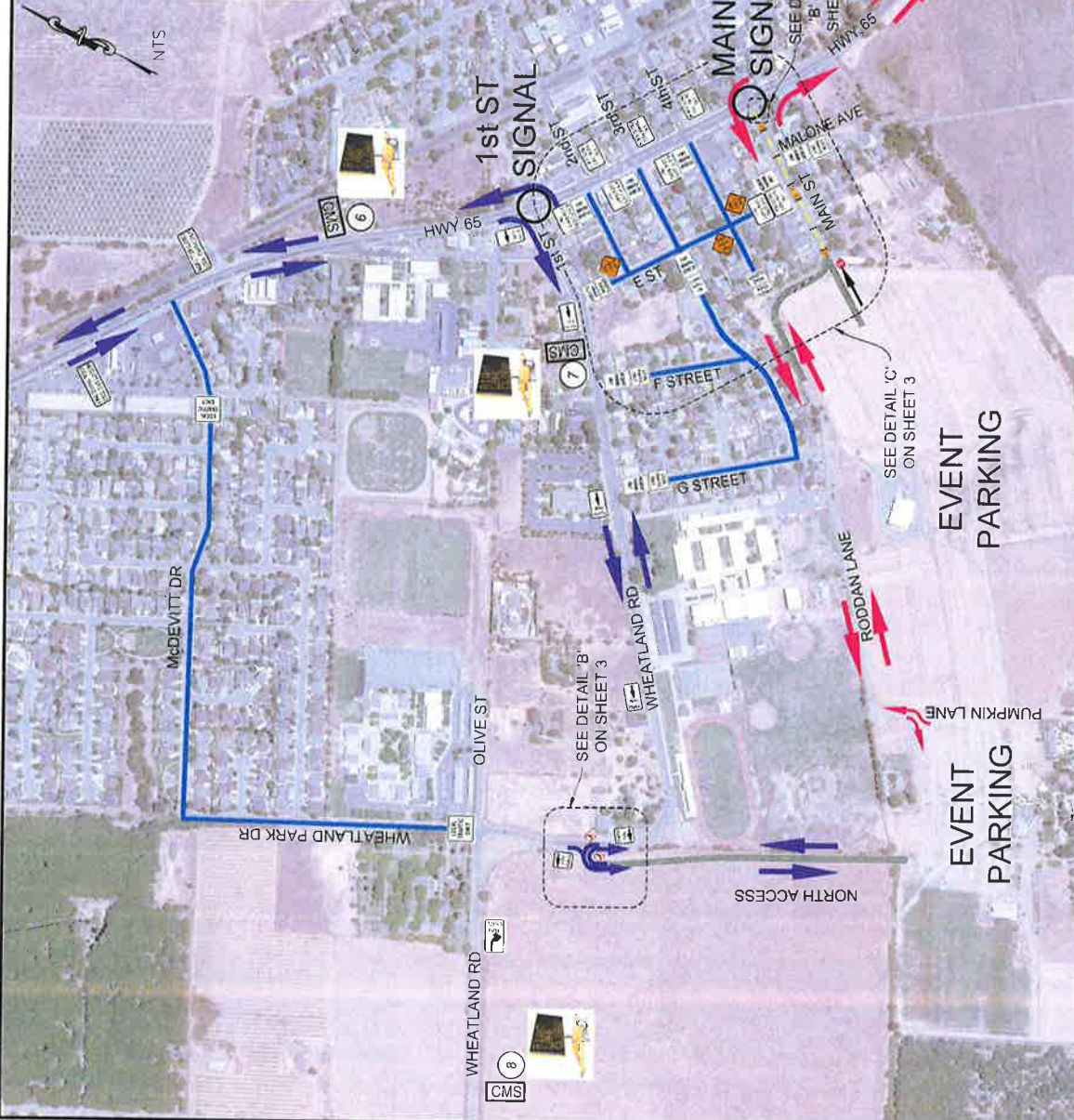
**NOTES**

- 1 TEMP. RIGHT TURN LANE PER DETAIL A3.
- 2 SOFT CLOSURE. SEE NOTE 5 SHEET3.
- 3 PLACE 3 TRAFFIC BARRELS TRANSVERSE AT 6 LOCATIONS (18 TOTAL) WITH SLOW FOR THE CONE ZONE SIGN AT END OF EACH BLOCK (4 PLACES).
- 4 FULL CLOSURE. THREE-TYPE 3 BARRICADES WITH TWO SANDBAGS EACH LEG.
- 5 CHANGEABLE MESSAGE SIGN (CMS): "PUMPKIN FARM" "LEFT AT SIGNAL"
- 6 CHANGEABLE MESSAGE SIGN "PUMPKIN FARM" "RIGHT AT MAIN ST."
- 7 CHANGEABLE MESSAGE SIGN "NO PUMPKIN FARM ACCESS" "RETURN TO HWY 65" "FOLLOW SIGNS"
- 8 CHANGEABLE MESSAGE SIGN "PUMPKIN FARM TURN RIGHT" "THEN RIGHT AT SIGNAL"



ORIGINAL PLOT DATE: JUL 03, 2024 AT 10:23 AM  
 C:\Users\jgarcia\OneDrive\Documents\Projects\2024\2024-07-03\Wheatland\Traffic Management Plan.mxd  
 User: jgarcia  
 Project: 2024-07-03  
 Title: 2024 BISHOP PUMPKIN FARM TRAFFIC MANAGEMENT PLAN





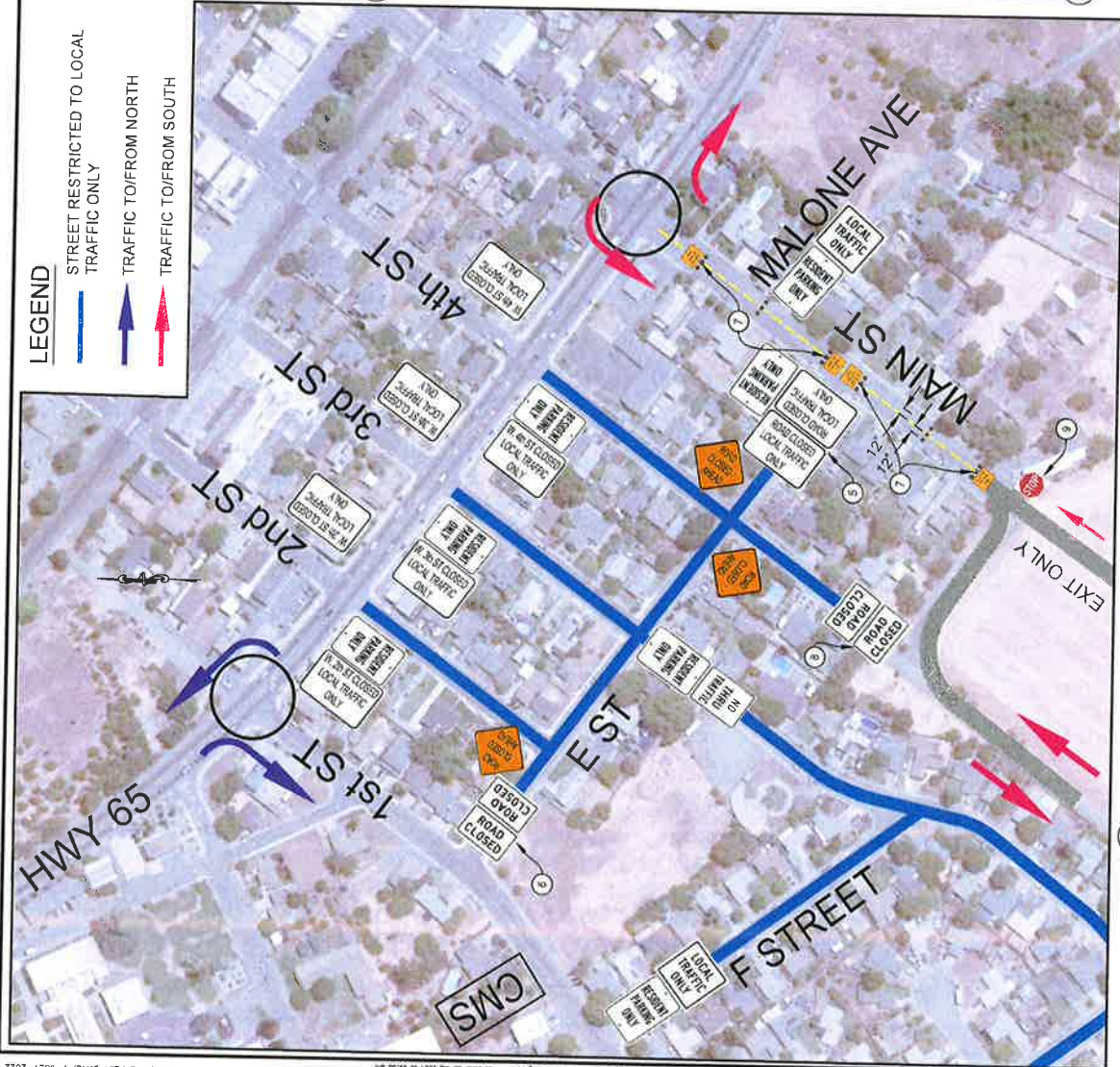
**LEGEND**

- STREET RESTRICTED TO LOCAL TRAFFIC ONLY
- CHANGEABLE MESSAGE SIGN
- TRAFFIC TO/FROM NORTH
- TRAFFIC TO/FROM SOUTH

**NOTES**

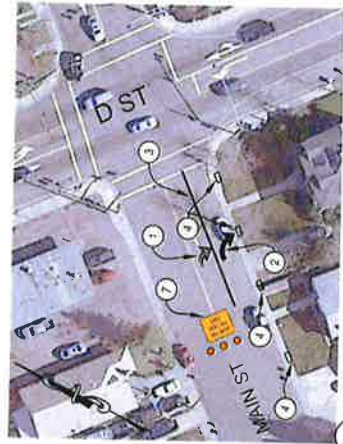
- 1 TEMP. RIGHT TURN LANE PER DETAIL A3.
- 2 SOFT CLOSURE: SEE NOTE 5 SHEET3.
- 3 PLACE 3 TRAFFIC BARRELS TRANSVERSE AT 6 LOCATIONS (18 TOTAL) WITH 'SLOW FOR THE CONE ZONE' SIGN AT (4 PLACES).
- 4 FULL CLOSURE: THREE-TYPE 3 BARRICADES WITH TWO SANDBAGS EACH LEG.
- 5 CHANGEABLE MESSAGE SIGN (CMS): "PUMPKIN FARM" "LEFT AT SIGNAL"
- 6 CHANGEABLE MESSAGE SIGN "PUMPKIN FARM" "RIGHT AT SIGNAL"
- 7 CHANGEABLE MESSAGE SIGN "PUMPKIN FARM" "CONTINUE 0.5-MILES" "FOLLOW SIGNS"
- 8 CHANGEABLE MESSAGE SIGN "PUMPKIN FARM TURN RIGHT" "FOLLOW SIGNS"





**LEGEND**

- Blue line: STREET RESTRICTED TO LOCAL TRAFFIC ONLY
- Purple line: TRAFFIC TO/FROM NORTH
- Red line: TRAFFIC TO/FROM SOUTH



**A MAIN ST & HWY 65 RIGHT TURN**



**B WHEATLAND ROAD TURN RESTRICTIONS**

**NOTES**

- BLACK-OUT RIGHT ARROW ON (E) TYPE II(B) MARKING, WITH ADHESIVE STRIPING TAPE.
- PLACE TEMPORARY TYPE III(R) RIGHT TURN ARROW WITH ADHESIVE STRIPING TAPE.
- STRIPES 60" OF 6" (DETAIL 38A) WHITE STRIPE, WITH ADHESIVE STRIPING TAPE.
- INSTALL "NO PARKING" SIGNS ON TYPE II BARRICADE (4 PLACES).
- SOFT CLOSURE: ONE - TYPE 3 BARRICADE ON EACH SHOULDER WITH TWO SANDBAGS EACH LEG, POST TWO "NO PARKING" SIGNS ON EACH SIDE OF STREET ON TYPE 2 BARRICADES, 40-FT APART CENTERED ON CLOSURE SIGN.
- FULL CLOSURE: FOUR - TYPE 3 BARRICADES WITH TWO SANDBAGS EACH LEG.
- PLACE 3 TRAFFIC BARRELS TRANSVERSE AT 6 LOCATIONS (18 TOTAL) WITH "SLOW FOR THE CONE ZONE" SIGN AT END OF EACH BLOCK (4 PLACES).
- FULL CLOSURE: THREE- TYPE 3 BARRICADES WITH TWO SAND BAGS EACH LEG.
- R-1 "STOP" SIGN ON TYPE 2 BARRICADE.

**GENERAL NOTES**

ALL SIGN SHALL BE SECURED TO TYPE 2 BARRICADES UNLESS OTHERWISE NOTED.

**C E STREET NEIGHBORHOOD**